



Apt 32 Princess House, 144 Princess Street, Manchester, M1 7EP

Jordan Fishwick are pleased to offer for sales this spacious modern two bedroom apartment in a very central location in the City Centre. The property is situated on the 4th floor and close to all major public transport with secure underground car park. This property is perfect for those wanting to be within a short walking distance of Manchester University, Chinatown and Piccadilly Train Station. There are two double bedrooms with a spacious lounge and a modern stylish bathroom and kitchen. Furnished to an excellent standard throughout. Manchester council tax band E. NO ONWARD CHAIN. *EWS1 Coming Soon - Mortgage buyers invited*

RENTED UNTIL JANUARY 2024 AT £950 PCM. (GOING RATE WOULD BE £1200+)

Offers Over £220,000

Viewing arrangements

Viewing strictly by appointment through the agent

245 Deansgate, Manchester, M3 4EN 0161 833 9499 opt 3

Entrance Hall

Laminate flooring. Ceiling light. Access to all room. Storage cupboard.

Living Room

15'1" x 13'10"

Laminate flooring. Spotlights. Access to balcony. TV and telephone points.

Kitchen

9'7" x 8'9"

Range of wall and base units with worktops over. Cooker with hob and extractor over. Sink with mixer tap. Free standing fridge/freezer and washing machine. Radiator.

Bedroom One

19'5" x 8'1"

Laminate flooring. Spotlights. Wall mounted heater.

En-suite

Tiled shower suite. Low level W.C. Sink with mixer tap. Shower cubical with mixer shower.

Bedroom Two

16'4" x 8'7"

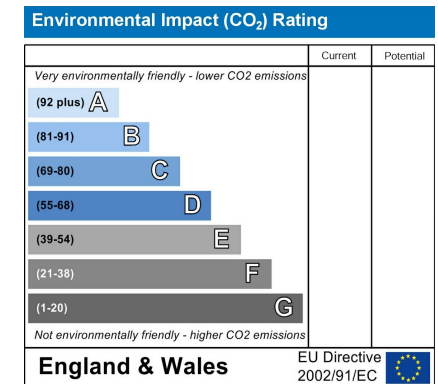
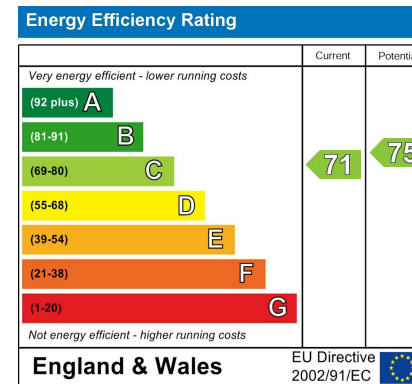
Laminate flooring. Spotlights. Wall mounted heater.

Bathroom

Fully tiled suite. Low level w.c. Sink with mixer tap. Bath with mixer shower over. Heated towel rail.

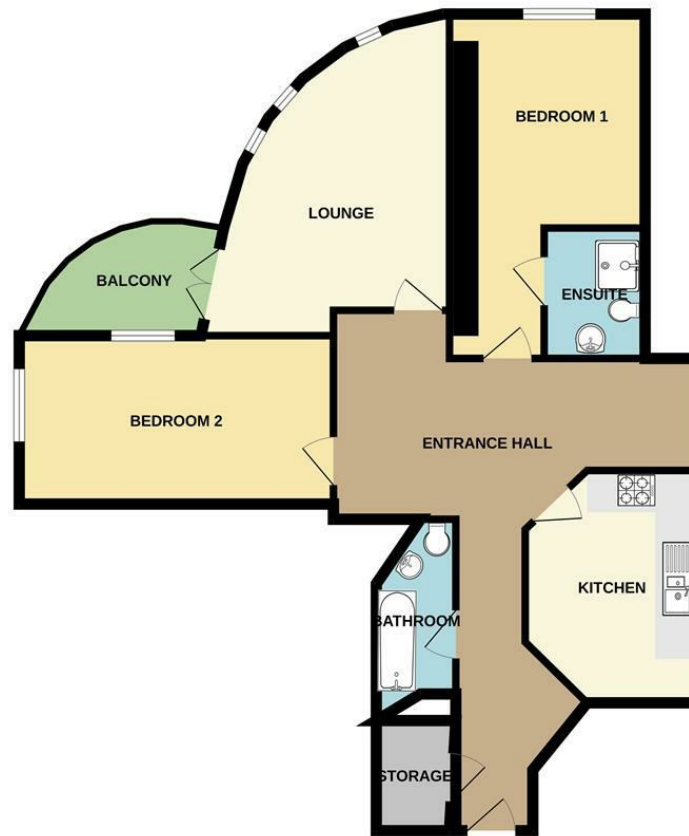
Additional Information

Ground rent £150 per annum
 Lease - 999 years from 2000
 Service charges - £343 per month
 Management company - Block Living





4TH FLOOR



Measurements are approximate. Not to scale. Illustrative purposes only.
Made with Metropax ©2023



These particulars are believed to be accurate but they are not guaranteed and do not form a contract. Neither Jordan Fishwick nor the vendor or lessor accept any responsibility in respect of these particulars, which are not intended to be statements or representations of fact and any intending purchaser or lessee must satisfy himself by inspection or otherwise as to the correctness of each of the statements contained in these particulars. Any floorplans on this brochure are for illustrative purposes only and are not necessarily to scale.

Offices at: Chorlton, Didsbury, Disley, Hale, Glossop, Macclesfield, Manchester Deansgate, Manchester Whitworth Street, New Mills, Sale, Wilmslow and Withington

245 Deansgate, Manchester, M3 4EN

0161 833 9499 opt 3

manchester@jordanfishwick.co.uk

www.jordanfishwick.co.uk

