



HARPER STREET

15



Flat 25 China House, Harter Street, Manchester, M1 6HP

Jordan Fishwick are pleased to offer for sale this beautifully presented TWO BEDROOM apartment on the 3rd floor of China House, a Grade 2 listed building in the heart of Central Manchester. The apartment comprises: entrance hallway, lounge with a kitchen that is separate, open plan and set back. Master double bedroom with en-suite shower room, a second double bedroom, and a family bathroom. China House is well located just a stones throw away from St Peters Square, and offers easy access to The Gay Village, Piccadilly Station, and Deansgate. Residents can apply parking permit from Manchester City Council for 3 Month Permit £150, 6 Month Permit £275, Annual Permit £500 for the first car. NO ONWARD CHAIN.

Rented at £1400 pcm until 3rd June 2024

Offers Over £240,000

Viewing arrangements

Viewing strictly by appointment through the agent
245 Deansgate, Manchester, M3 4EN 0161 833 9499 opt 3

Entrance Hallway

Laminate flooring. Ceiling lights. Access to all rooms.

Living Room

16'1" x 13'3"

Fitted carpet. Wall mounted heater. Wall lights. TV point.

Kitchen

8'7" x 6'7"

Range of wall and base units with worktops over. Sink with mixer tap. Integrated fridge/freezer. Space for washing machine. Ceiling and undercounter lights.

Bedroom One

12'2" x 11'10"

Fitted carpet. Wall mounted heater. Ceiling light. Telephone point. Access to ensuite.

En-suite

Fully tiled suite. Low level w/c. Sink with mixer tap. Shower with mixer shower. Heated towel rail.

Bedroom Two

15'5" x 10'2"

Fitted carpet. Wall mounted heater. Ceiling light.

Bathroom

Fully tiled suite. Low level w/c. Sink with mixer tap. Bath with mixer shower over. Heated towel rail.

Additional Information

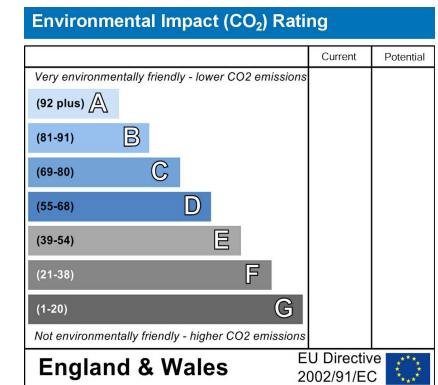
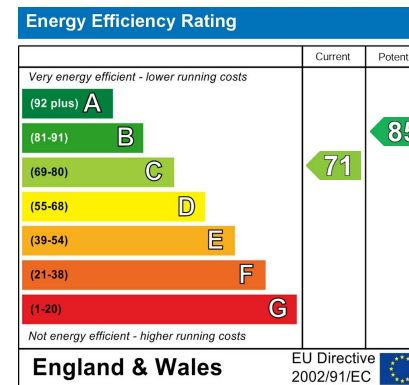
Years remaining on lease; 977

Annual Service Charge Amount £3968.16 per annum

Ground Rent Amount, £200 per annum

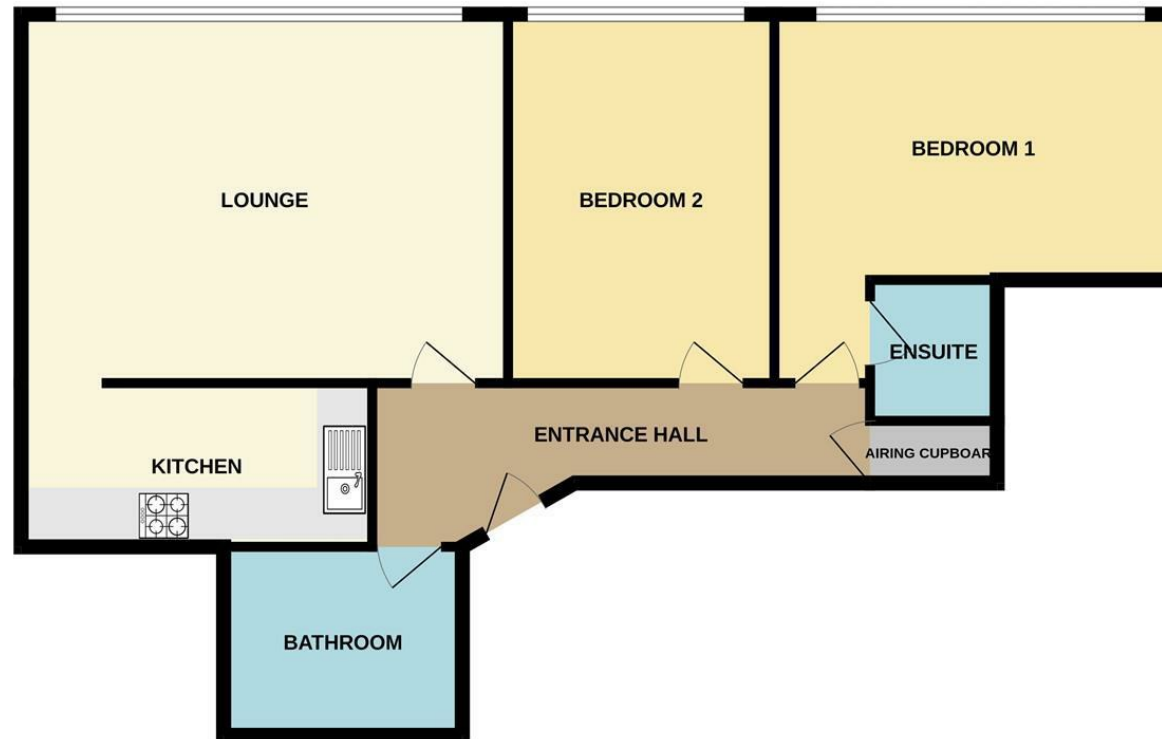
Council Tax Band; E

Management company - Rendall and Rittner





3RD FLOOR



Measurements are approximate. Not to scale. Illustrative purposes only
Made with Metropix ©2023



These particulars are believed to be accurate but they are not guaranteed and do not form a contract. Neither Jordan Fishwick nor the vendor or lessor accept any responsibility in respect of these particulars, which are not intended to be statements or representations of fact and any intending purchaser or lessee must satisfy himself by inspection or otherwise as to the correctness of each of the statements contained in these particulars. Any floorplans on this brochure are for illustrative purposes only and are not necessarily to scale.

Offices at: Chorlton, Didsbury, Disley, Hale, Glossop, Macclesfield, Manchester Deansgate, Manchester Whitworth Street, New Mills, Sale, Wilmslow and Withington

245 Deansgate, Manchester, M3 4EN

0161 833 9499 opt 3

manchester@jordanfishwick.co.uk

www.jordanfishwick.co.uk

