



Apt 2505 Beetham Tower, 301 Deansgate, Manchester, M3 4LT

Cash Buyers Only

Jordan Fishwick are delighted to offer this superb apartment on the 25th floor of the south elevation of Beetham Tower. This award-winning building includes a 24 hour concierge and fabulous views over Greater Manchester and beyond. Entrance hallway with double storage cupboard, spacious living area with sliding doors to the 'buffer zone' terrace area, stylish kitchen with integrated appliances, double bedroom with fitted wardrobes and a stylish bathroom with contemporary fittings. EWS1 IN PLACE.

Price £165,000

Viewing arrangements

Viewing strictly by appointment through the agent

245 Deansgate, Manchester, M3 4EN 0161 833 9499 opt 3

Entrance Hall

Wooden flooring. Storage cupboard. Doors to all rooms. Spotlights.

Living Room

14'5" x 13'3"

Large, bright open plan living space with floor to ceiling south facing windows and door leading on to the spacious internal balcony.

Kitchen

8'6" x 9'6"

The modern kitchen comes fitted with a range of eye & base level units. A host of integrated appliances including electric oven/hob, fridge/freezer and washing machine

Bedroom

14'9" x 9'2"

Large double bedroom with fitted double wardrobes. Floor to ceiling south facing windows to rear elevation and patio door leading on to the balcony.

Bathroom

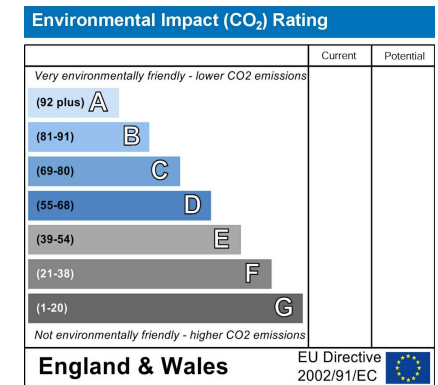
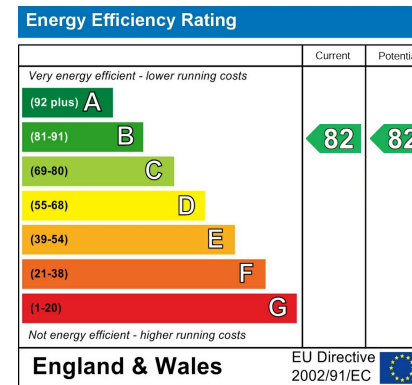
Family size bathroom comprising of panelled bath tub with shower over, low level W.C and wall mounted wash basin, heated towel radiator and mirrored units.

Externally

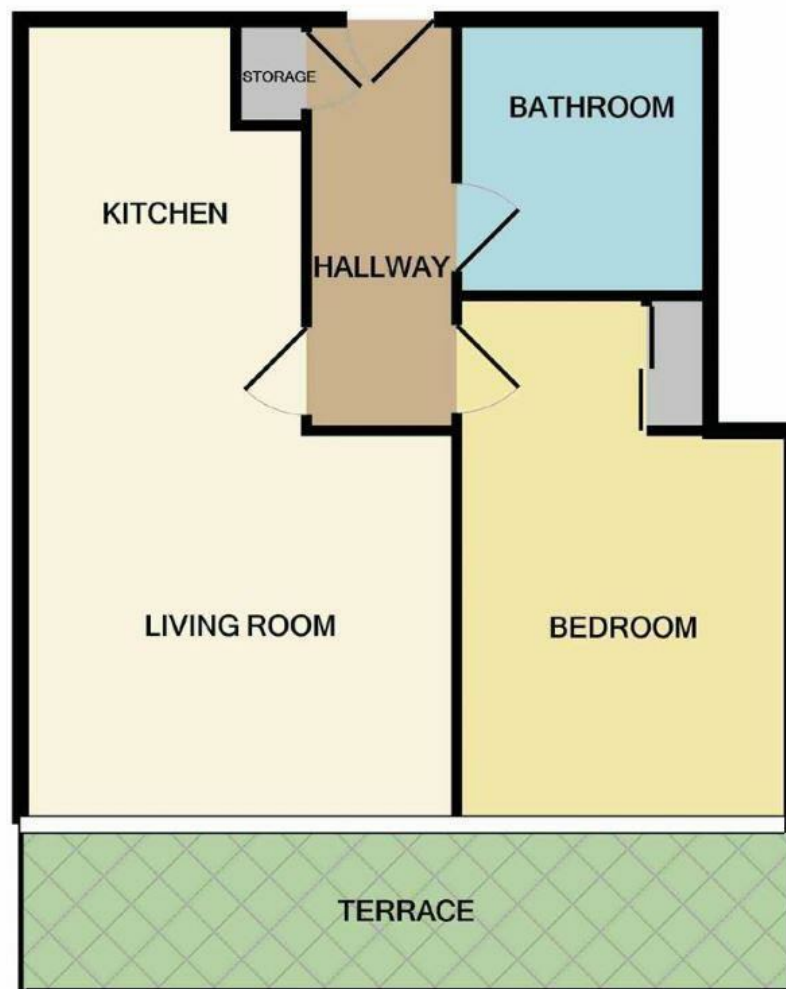
24 hour concierge. Lifts to all floors. Balcony.

Additional Information

Service Charge: TBC
 Lease: 999 Years
 Ground Rent: £150 per annum







These particulars are believed to be accurate but they are not guaranteed and do not form a contract. Neither Jordan Fishwick nor the vendor or lessor accept any responsibility in respect of these particulars, which are not intended to be statements or representations of fact and any intending purchaser or lessee must satisfy himself by inspection or otherwise as to the correctness of each of the statements contained in these particulars. Any floorplans on this brochure are for illustrative purposes only and are not necessarily to scale.

Offices at: Chorlton, Didsbury, Disley, Hale, Glossop, Macclesfield, Manchester Deansgate, Manchester Whitworth Street, New Mills, Sale, Wilmslow and Withington

245 Deansgate, Manchester, M3 4EN

0161 833 9499 opt 3

manchester@jordanfishwick.co.uk
www.jordanfishwick.co.uk

