



jordan fishwick

DIDSBURY
Dundonald Road



**Dundonald Road,
Didsbury, M20 6RU**

Guide Price £335,000



The Property

A modern semi detached property enjoying a superb location on a quiet cul-de-sac which is within easy reach of Didsbury Village and the Metrolink, with the benefit of a side driveway and private gardens. Tastefully presented throughout and with both gas fired central heating and uPVC double glazing installed, the living space includes a lounge with square bay window, dining kitchen with integrated appliances, two double bedrooms and a bathroom with three piece suite. **** NO ONWARD CHAIN****

Directions

M20 6RU



- Modern semi detached
- Ideal cul-de-sac location
- Two double bedrooms
- Living room with bay window
- Dining kitchen
- uPVC double glazing
- Gas central heating
- Driveway providing parking
- Good sized garden to the rear
- NO ONWARD CHAIN

Postcode - M20 6RU

EPC Rating - C

Floor Area - 567.00 sq ft

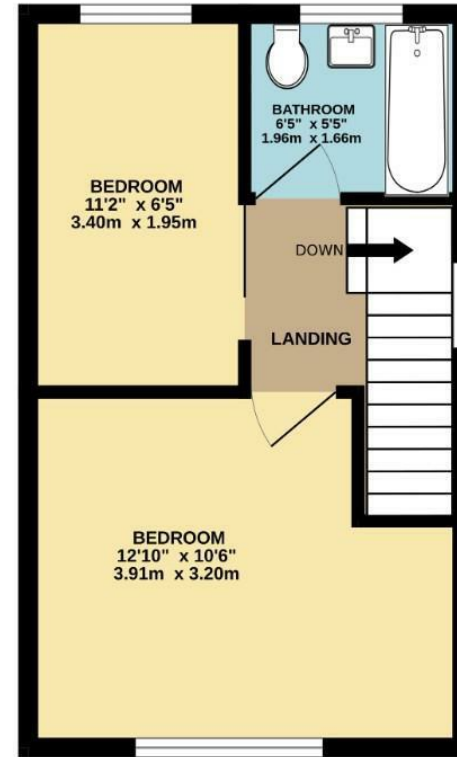
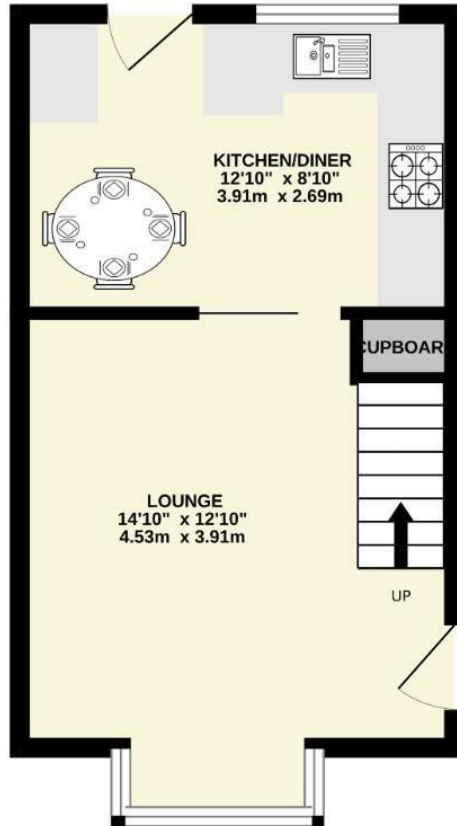
Local Authority - Manchester City Council

Council Tax - C



GROUND FLOOR
289 sq.ft. (26.9 sq.m.) approx.

1ST FLOOR
278 sq.ft. (25.8 sq.m.) approx.



TOTAL FLOOR AREA : 567 sq.ft. (52.7 sq.m.) approx.
Measurements are approximate. Not to scale. Illustrative purposes only
Made with Metropix ©2023



These particulars are believed to be accurate but they are not guaranteed and do not form a contract. Neither Jordan Fishwick nor the vendor or lessor accept any responsibility in respect of these particulars, which are not intended to be statements or representations of fact and any intending purchaser or lessee must satisfy himself by inspection or otherwise as to the correctness of each of the statements contained in these particulars. Any floorplans on this brochure are for illustrative purposes only and are not necessarily to scale.

Offices also at: Wilmslow, Macclesfield, Hale, Sale, Chorlton, Glossop, Manchester & Salford

757-759 Wilmslow Road, Didsbury Village, Manchester

0161 445 4480

didsbury@jordanfishwick.co.uk
www.jordanfishwick.co.uk