



Jordan fishwick

Attercliffe Road
Chorlton



Attercliffe Road Chorlton M21 9FS

£1,300 Per Month



The Property

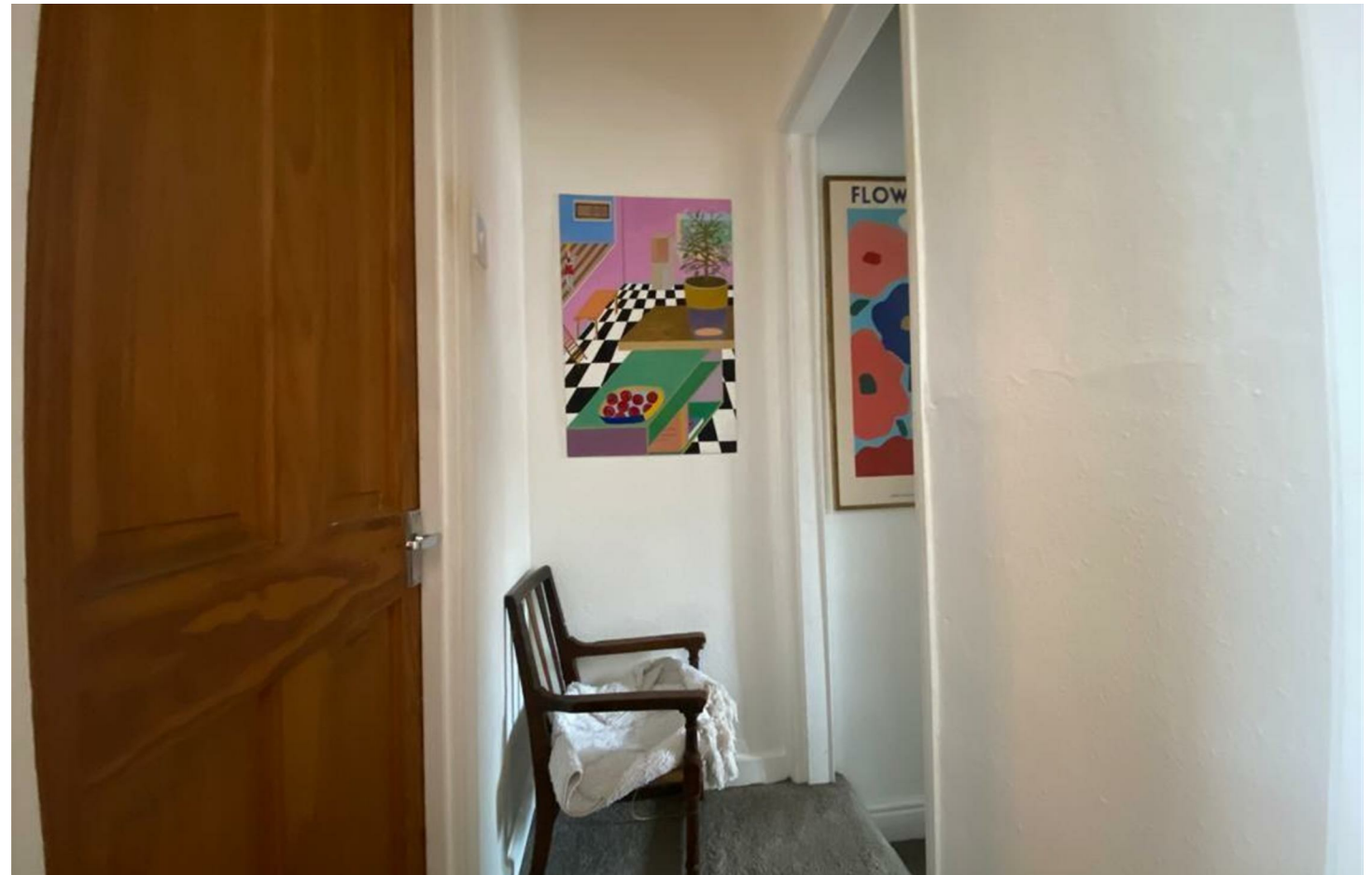
NO MORE VIEWINGS AVAILABLEAVAILABLE NOW*** We are delighted to offer this beautiful 2 bedroomed Victorian Terrace to the market. Situated in the Chorlton Green area close to Beech road full of cafes and bars, highly regarded primary schools and Chorlton Ee's. This cute terrace offers lounge, kitchen open plan to large dining room, one large double bedroom and smaller bedroom to the rear, bathroom with shower over bath. To the rear of the property there is an enclosed yard with established shrubbery, the rear passage way is gated with residents access only. Viewing highly recommended.

*****To arrange a viewing please call
0161 393 7539 *****

Directions

- 2 Bedroom Terrace
- 2 Reception Rooms
- Cul-de-sac
- Beautifully presented
- Enclosed yard with gated ginnal
- Located off Chorlton Green
- Council Tax Band B

Postcode - M21 9FS
EPC Rating - D
Floor Area - sq ft
Local Authority - Manchester
Council Tax - B





These particulars are believed to be accurate but they are not guaranteed and do not form a contract. Neither Jordan Fishwick nor the vendor or lessor accept any responsibility in respect of these particulars, which are not intended to be statements or representations of fact and any intending purchaser or lessee must satisfy himself by inspection or otherwise as to the correctness of each of the statements contained in these particulars. Any floorplans on this brochure are for illustrative purposes only and are not necessarily to scale.

Offices at: Offices at Chorlton, Didsbury, Disley, Hale, Glossop, Macclesfield, Manchester Deansgate, Manchester Whitworth Street, New Mills, Sale, Wilmslow and Withington

410-412 Barlow Moor Road, Chorlton, Manchester, M21
8AD

www.jordanfishwick.co.uk