



jordan fishwick

NORTHENDEN
Redwood House



Redwood House, Northenden, M22 4NT

£89,950



The Property

****OVER 60's ONLY**** - Ready to move into, this first floor retirement apartment is ideal for anyone over 60, being centrally located with easy access to Northenden Village, in addition to lift access, residents parking, attractive communal grounds, 24 hour emergency call system, and social communal areas. The living space is well presented throughout and includes a spacious living room, a modern kitchen & shower room, two double bedrooms and a good sized hallway with built-in storage cupboard. In addition, there is uPVC double glazing and no onward chain.

Directions

M22 4NT



- Appealing retirement apartment
- Over 60's
- Well presented throughout
- Two bedrooms
- Generous living room
- Modern kitchen & shower room
- Entrance hall with built-in storage
- Lift access
- Residents parking
- Located in centre of Northenden

Postcode - M22 4NT

EPC Rating - C

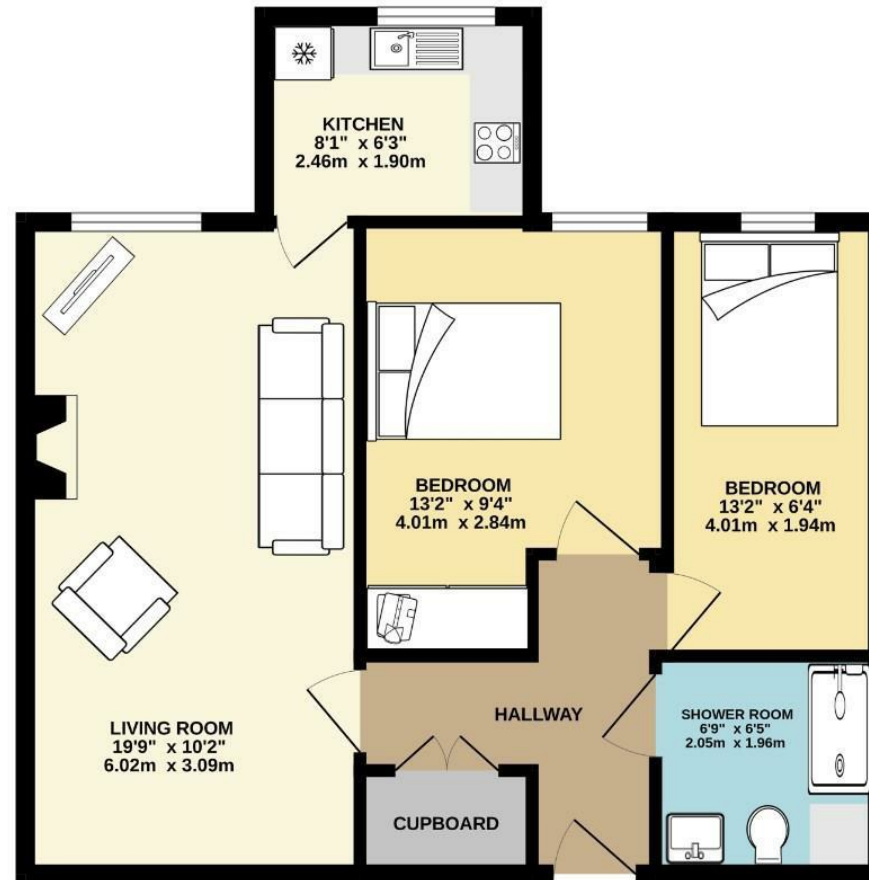
Floor Area - 561.00 sq ft

Local Authority - Manchester City Council

Council Tax - A



FIRST FLOOR
557 sq.ft. (51.7 sq.m.) approx.



TOTAL FLOOR AREA: 557 sq.ft. (51.7 sq.m.) approx.
Measurements are approximate. Not to scale. Illustrative purposes only.
Made with Metropix ©2023



These particulars are believed to be accurate but they are not guaranteed and do not form a contract. Neither Jordan Fishwick nor the vendor or lessor accept any responsibility in respect of these particulars, which are not intended to be statements or representations of fact and any intending purchaser or lessee must satisfy himself by inspection or otherwise as to the correctness of each of the statements contained in these particulars. Any floorplans on this brochure are for illustrative purposes only and are not necessarily to scale.

Offices also at: Wilmslow, Macclesfield, Hale, Sale, Chorlton, Glossop, Manchester & Salford

757-759 Wilmslow Road, Didsbury Village, Manchester

0161 445 4480

didsbury@jordanfishwick.co.uk
www.jordanfishwick.co.uk