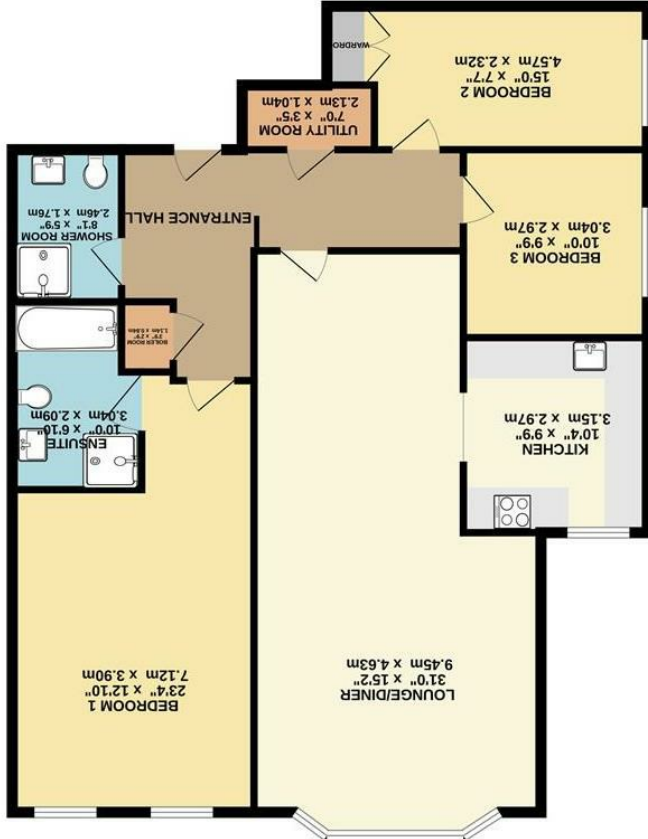


Measurements are given to the internal face of the walls unless otherwise stated. Measurements are given to the internal face of the walls unless otherwise stated. Measurements are given to the internal face of the walls unless otherwise stated. Measurements are given to the internal face of the walls unless otherwise stated.



GROUND FLOOR







# Chesham Place Altrincham WA14 2JL

£650,000

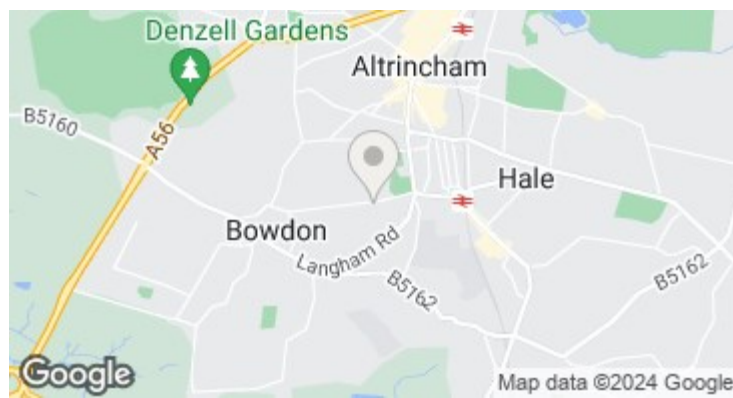
## The Property

A magnificent first floor apartment with lift access in a prestigious gated development being just a stones throw from Hale village. \*\*\* NO ONWARD CHAIN\*\*\*

The original mansion house was converted into just nine apartments by renowned Developer Belmont Homes in 2005. The apartment retains the large rooms, 10ft ceiling heights and features, which are complimented by a very high quality, contemporary finish. Large living/dining room with wooden flooring and bay window, stylish fitted kitchen, extensive main bedroom with a four piece En-suite, a further generous double bedroom with built in wardrobes, and also a third bedroom. Finally you have a shower room and separate utility room. The building sits behind secure electric gates and is surrounded by immaculate communal gardens with allocated parking.

## Directions

WA14 2JL



- 2nd Floor Apartment
- No Chain
- Underground Parking
- Shower room and 4 piece En-suite
- Gated Entrance
- Communal Gardens
- Utility Room
- Walking Distance to Hale and Altrincham
- Lift Access
- Modern Throughout

Postcode - WA14 2JL  
 EPC Rating - C  
 Floor Area - 1259.00 sq ft  
 Local Authority - Trafford  
 Council Tax - G

