



*jordan fishwick*

Longmeade Drive Chapel-En-Le-Frith High



# Longmeade Drive Chapel-En-Le-Frith High Peak SK23 0XP

£430,000



## The Property

Occupying a prime, cul-de-sac position on a generous corner plot within a well regarded modern development in Chapel-en-le-frith, a superb three bedroom detached bungalow. Extended and improved in recent years to offer spacious, balanced, well presented accommodation. Backing onto Warm Brook and a wooded copse and offered for sale with No Chain, pvc double glazing and gas central heating. Comprising: entrance hall, open plan lounge dining room, breakfast kitchen, sitting room/breakfast room, utility room, master bedroom with wet room, two further bedrooms and a family bathroom. Attached double garage, large driveway and enclosed gardens. Viewing essential.






- Corner Plot
- Backing onto Woods
- Cul-de-sac Position
- Detached Executive Bungalow
- Extended Three Bedroom Accommodation
- Double Garage and Large Driveway
- Private Gardens
- Master Suite with Wet Room
- Pvc Double Glazing and Gas Cent Heating
- No Chain

**Postcode** SK23 0XP

**EPC Rating** C

**Local Authority** High Peak

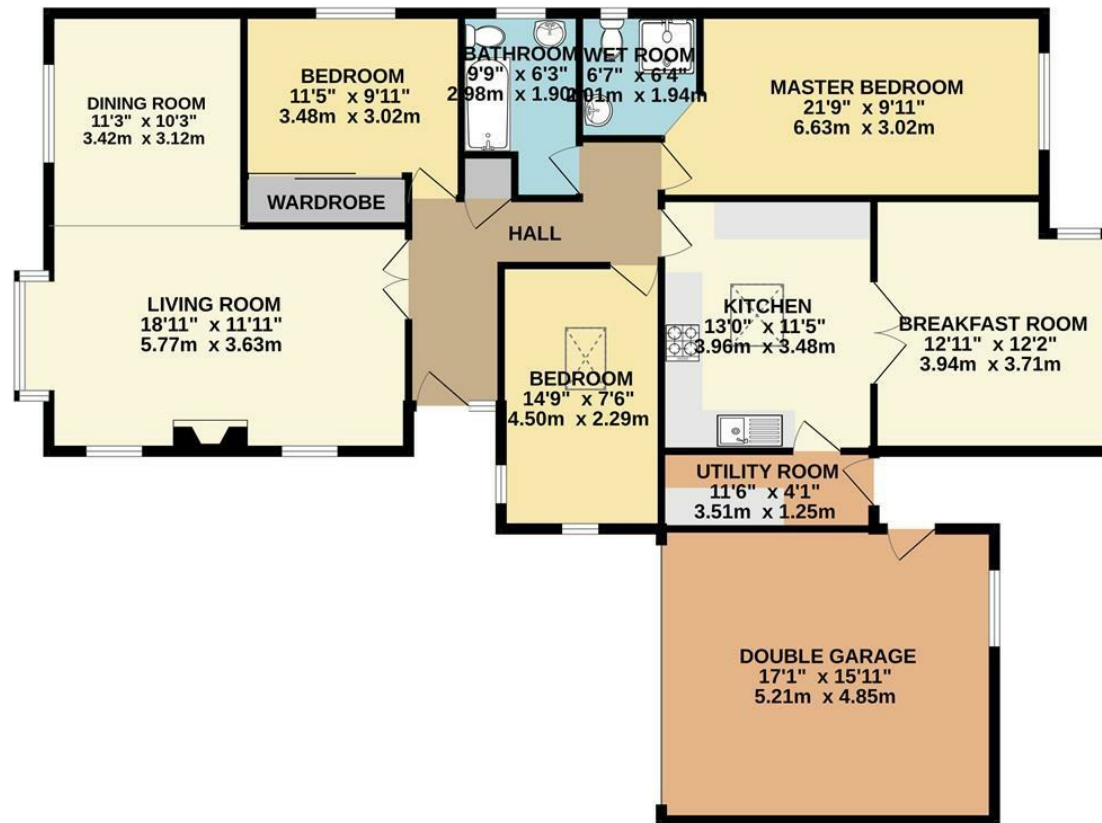
**Council Tax** E

Energy Efficiency Rating		
	Current	Potential
Very energy efficient - lower running costs		
(92 plus) <b>A</b>		
(81-91) <b>B</b>		<b>84</b>
(69-80) <b>C</b>	<b>69</b>	
(55-68) <b>D</b>		
(39-54) <b>E</b>		
(21-38) <b>F</b>		
(1-20) <b>G</b>		
Not energy efficient - higher running costs		
<b>England &amp; Wales</b>	EU Directive 2002/91/EC 	





## GROUND FLOOR



Whilst every attempt has been made to ensure the accuracy of the floorplan contained here, measurements of doors, windows, rooms and any other items are approximate and no responsibility is taken for any error, omission or mis-statement. This plan is for illustrative purposes only and should be used as such by any prospective purchaser. The services, systems and appliances shown have not been tested and no guarantee as to their operability or efficiency can be given.  
Made with Metropix ©2023



These particulars are believed to be accurate but they are not guaranteed and do not form a contract. Neither Jordan Fishwick nor the vendor or lessor accept any responsibility in respect of these particulars, which are not intended to be statements or representations of fact and any intending purchaser or lessee must satisfy himself by inspection or otherwise as to the correctness of each of the statements contained in these particulars. Any floorplans on this brochure are for illustrative purposes only and are not necessarily to scale.

Offices at: Chorlton, Didsbury, Disley, Hale, Glossop, Macclesfield, Manchester Deansgate, Manchester Whitworth Street, New Mills, Sale, Wilmslow and Withington

14 Market Street, Disley, Cheshire, SK12 2AA

01663 76 78 78

disley@jordanfishwick.co.uk

www.jordanfishwick.co.uk