



*jordan fishwick*

**WEST DIDSBURY**  
Central Road





## Central Road, West Didsbury, M20 4YE

Guide Price £170,000



### The Property

Ready to move into, this stylish ground floor apartment forms part of a purpose built development in the heart of West Didsbury, with secure gated parking and no onward chain. A private entrance set back from Burton Road opens to the entrance hall, with a spacious open plan living/kitchen area with a range of fitted units, separate double bedroom and bathroom with white suite. In addition, there is uPVC double glazing throughout. Positioned on the corner of Central Road & Burton Road, the property is ideally placed to take advantage of the nearby cutting-edge bars, shops and award-winning restaurants. The Metrolink and main bus routes are close at hand and links to the motorway network and Manchester Airport are conveniently close by.

### Directions

M20 4YE





- Appealing ground floor apartment
- Great location in West Didsbury
- Secure gated parking
- Private entrance
- Separate entrance hall
- Open plan living/kitchen
- Bathroom with white suite
- uPVC double glazing
- Popular purpose built development
- No onward chain

Postcode - M20 4YE

EPC Rating - D

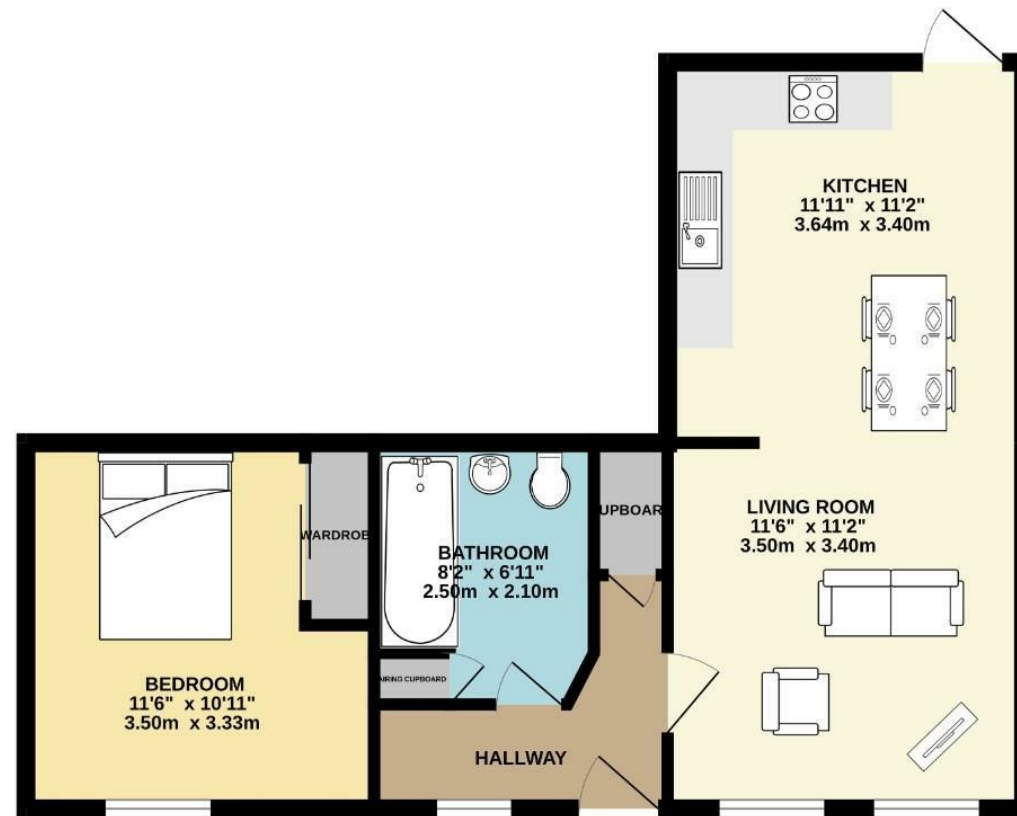
Floor Area - 493.00 sq ft

Local Authority - Manchester City Council

Council Tax - B



GROUND FLOOR  
493 sq.ft. (45.8 sq.m.) approx.



TOTAL FLOOR AREA: 493 sq.ft. (45.8 sq.m.) approx.  
Measurements are approximate. Not to scale. Illustrative purposes only.  
Made with: Metropix ©2023



These particulars are believed to be accurate but they are not guaranteed and do not form a contract. Neither Jordan Fishwick nor the vendor or lessor accept any responsibility in respect of these particulars, which are not intended to be statements or representations of fact and any intending purchaser or lessee must satisfy himself by inspection or otherwise as to the correctness of each of the statements contained in these particulars. Any floorplans on this brochure are for illustrative purposes only and are not necessarily to scale.

Offices also at: Wilmslow, Macclesfield, Hale, Sale, Chorlton, Glossop, Manchester & Salford

757-759 Wilmslow Road, Didsbury Village, Manchester

0161 445 4480

didsbury@jordanfishwick.co.uk  
www.jordanfishwick.co.uk