



*jordan fishwick*

Dryhurst Lane Disley Stockport

**Dryhurst Lane Disley Stockport  
SK12 2EQ**

**Price £199,950**



**The Property**

**\*CHARMING BIJOU COTTAGE\*** Conveniently located for Disley Village and railway station, a most charming brick built mid terraced cottage. Delightful bijou accommodation with fabulous rear views, off road parking and a cracking garden. Tastefully presented, pvc double glazing, gas central heating and comprising: living room with slate tiled floor and wood burning stove, re-fitted kitchen with open plan conservatory/dining area, first floor master bedroom with fitted wardrobes, second box room, suitable as an office or nursery; and bathroom with white suite. Offered For Sale with No Chain and Viewing highly recommended,



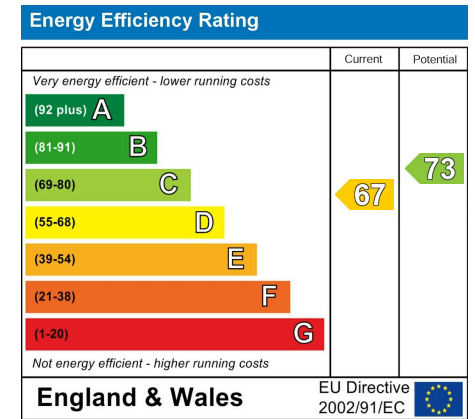
- Beautiful Cottage
- Amazing Rear Views
- Convenient For Disley Village and Station
- No Chain
- Parking and Gardens
- Useful Additional Conservatory
- Master Bedroom Plus Box Room
- Wood Burning Stove

**Postcode** SK12 2EQ

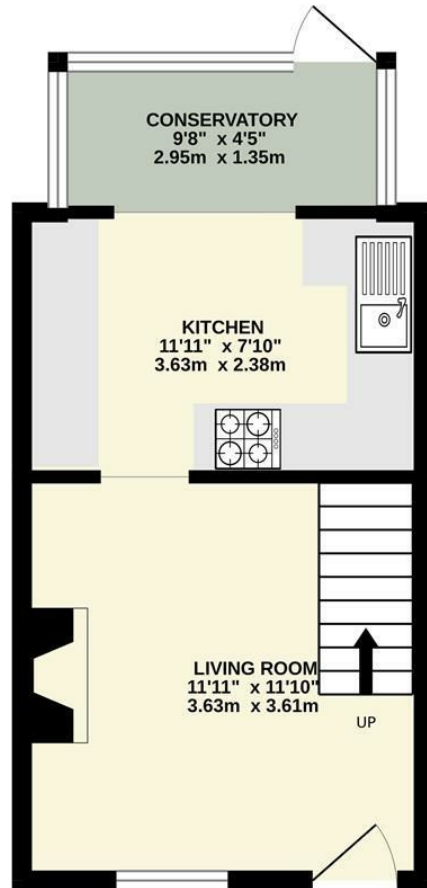
**EPC Rating** D

**Local Authority** Cheshire East

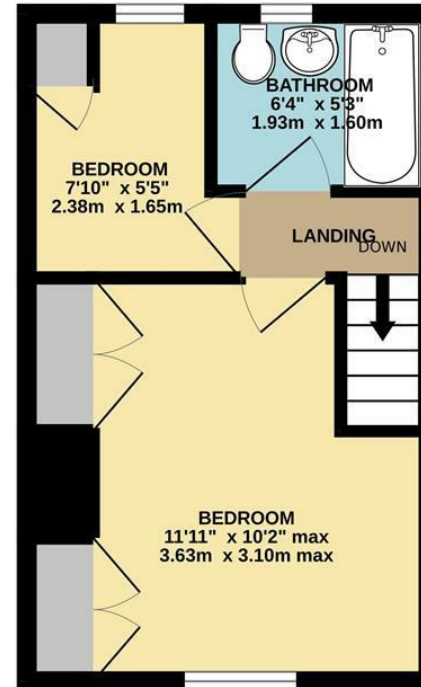
**Council Tax** B



GROUND FLOOR



1ST FLOOR



Whilst every attempt has been made to ensure the accuracy of the floorplan contained here, measurements of doors, windows, rooms and any other items are approximate and no responsibility is taken for any error, omission or mis-statement. This plan is for illustrative purposes only and should be used as such by any prospective purchaser. The services, systems and appliances shown have not been tested and no guarantee as to their operability or efficiency can be given.  
Made with Metropix ©2023



These particulars are believed to be accurate but they are not guaranteed and do not form a contract. Neither Jordan Fishwick nor the vendor or lessor accept any responsibility in respect of these particulars, which are not intended to be statements or representations of fact and any intending purchaser or lessee must satisfy himself by inspection or otherwise as to the correctness of each of the statements contained in these particulars. Any floorplans on this brochure are for illustrative purposes only and are not necessarily to scale.

Offices at: Chorlton, Didsbury, Disley, Hale, Glossop, Macclesfield, Manchester Deansgate, Manchester Whitworth Street, New Mills, Sale, Wilmslow and Withington

14 Market Street, Disley, Cheshire, SK12 2AA

01663 76 78 78

disley@jordanfishwick.co.uk

www.jordanfishwick.co.uk