



Jordan fishwick

59 Heathside Road, Withington, M20 4XH
£1,400 Per Calendar Month



**Heathside Road Manchester
M20 4XH**

£1,400 Per Calendar Month



The Property

View our Virtual Tour Here - <https://youtu.be/fsDV4DU6y1g>

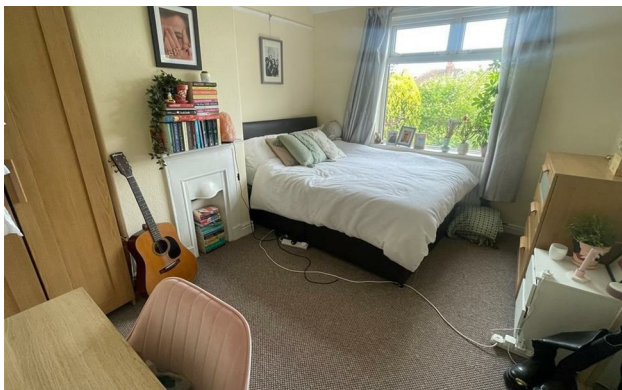
**** AVAILABLE END AUGUST **** A superbly presented semi detached home located in a popular residential street in Withington. Ideal for professional sharers. The property comprises of; entrance hall, front large double bedroom, open reception lounge and dining room and kitchen with fully fitted appliances. To the first floor there are three generous bedrooms, smaller spare room that is perfect for a home office and a three piece bathroom suite. The property also benefits from a large rear garden, off road parking and gas central heating. Viewing highly recommended. FULLY FURNISHED. To view please contact our Withington branch on 0161 438 2411 and discuss Reposit scheme.

EPC Rating - C

- Available End of August
- Three Double Bedrooms
- Open Reception Room
- Home Office
- Ideal for Professional Sharers or Families
- Fully Furnished
- Large Garden & Off Road Parking
- Great Location
- Council Tax Band C
- No Deposit Option Available



| Energy Efficiency Rating | | |
|---|----------------------------|-----------|
| | Current | Potential |
| Very energy efficient - lower running costs | | |
| (92 plus) A | | |
| (81-91) B | | 83 |
| (69-80) C | 71 | |
| (55-68) D | | |
| (39-54) E | | |
| (21-38) F | | |
| (1-20) G | | |
| Not energy efficient - higher running costs | | |
| England & Wales | EU Directive 2002/91/EC | |





These particulars are believed to be accurate but they are not guaranteed and do not form a contract. Neither Jordan Fishwick nor the vendor or lessor accept any responsibility in respect of these particulars, which are not intended to be statements or representations of fact and any intending purchaser or lessee must satisfy himself by inspection or otherwise as to the correctness of each of the statements contained in these particulars. Any floorplans on this brochure are for illustrative purposes only and are not necessarily to scale.

Offices at: Offices at Chorlton, Didsbury, Disley, Hale, Glossop, Macclesfield, Manchester Deansgate, Manchester Whitworth Street, New Mills, Sale, Wilmslow and Withington