



jordan fishwick

MANCHESTER
Shearwater House

Shearwater House, Manchester, M19 1AY

Guide Price £180,000

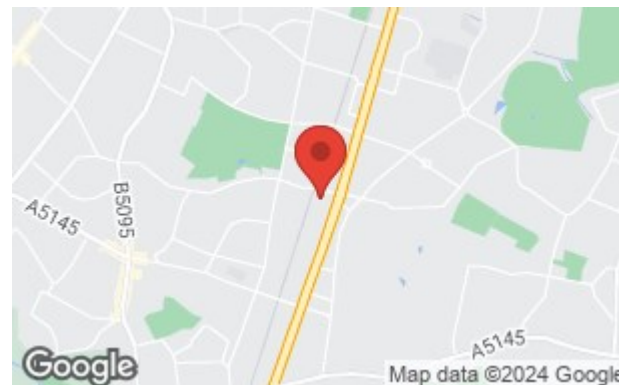


The Property

An appealing, two double bedroom, two bathroom apartment with the benefit of a top floor position within a purpose built development that was constructed circa 2003. Enjoying a convenient location with easy access to Didsbury Village and excellent transport links by rail and along nearby Kingsway (A34). UPVC double glazing and electric heating, the living space in outline comprises:- Generous entrance hall with useful storage, lounge/dining room over 23ft with 'Juliette' balcony, fitted kitchen with a range of units and recently installed oven, hob & washing machine, two double bedrooms, en-suite shower room to the main and fitted bathroom with white suite. Externally, there is allocated residents parking and well tended communal gardens and grounds. No onward chain.

Directions

M19 1AY



- Appealing purpose built apartment
- Top floor position
- Two double bedrooms
- Two bathrooms
- Living room over 23ft
- Juliette balcony
- Fitted kitchen
- Generous entrance hall
- uPVC double glazing
- Allocated parking

Postcode - M19 1AY

EPC Rating - C

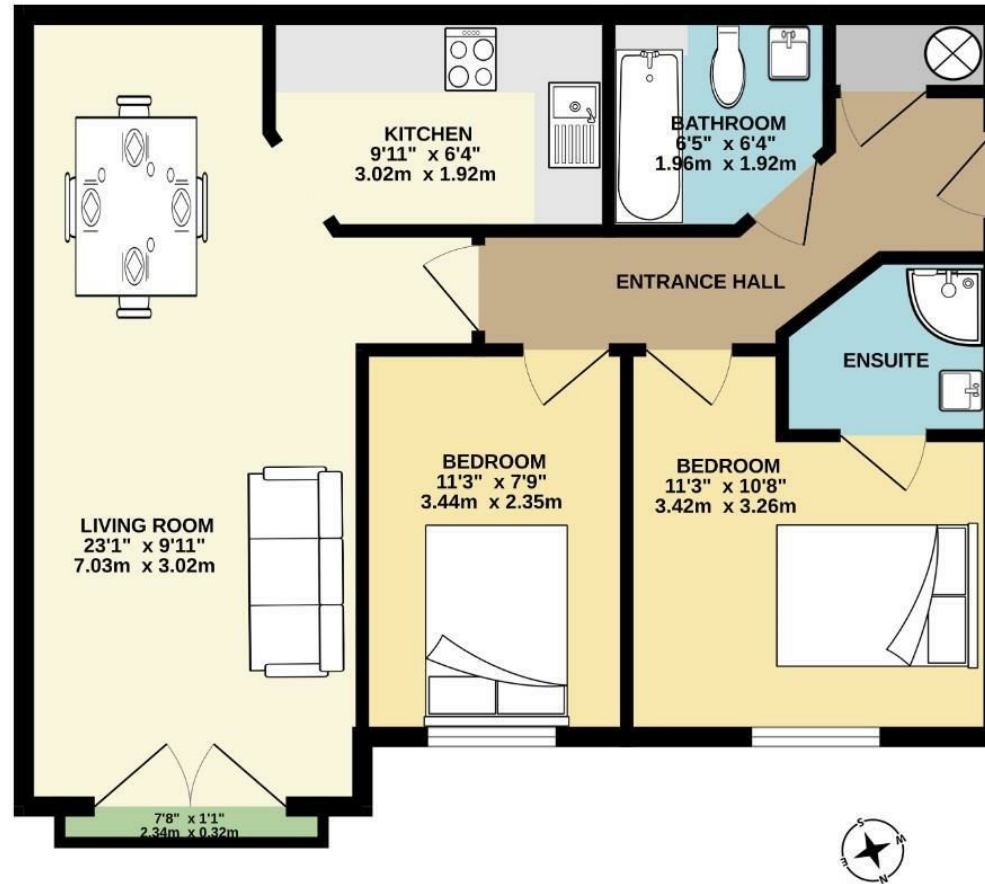
Floor Area - 616.00 sq ft

Local Authority - Manchester City Council

Council Tax - B



616 sq.ft. (57.2 sq.m.) approx.



TOTAL FLOOR AREA: 616 sq.ft. (57.2 sq.m.) approx.
Measurements are approximate. Not to scale. Illustrative purposes only.
Made with Metropix 60023



These particulars are believed to be accurate but they are not guaranteed and do not form a contract. Neither Jordan Fishwick nor the vendor or lessor accept any responsibility in respect of these particulars, which are not intended to be statements or representations of fact and any intending purchaser or lessee must satisfy himself by inspection or otherwise as to the correctness of each of the statements contained in these particulars. Any floorplans on this brochure are for illustrative purposes only and are not necessarily to scale.

Offices also at: Wilmslow, Macclesfield, Hale, Sale, Chorlton, Glossop, Manchester & Salford

757-759 Wilmslow Road, Didsbury Village, Manchester

0161 445 4480

didsbury@jordanfishwick.co.uk
www.jordanfishwick.co.uk