



*jordan fishwick*

**WEST DIDSBURY**  
Barlow Moor Road



# Barlow Moor Road, West Didsbury, M20 2PU

Guide Price £295,000



## The Property

A stylish and spacious, TWO DOUBLE BEDROOM, first floor apartment offering well planned living space extending over 700 sq ft, coupled with SECURE GATED PARKING and an EXCELLENT LOCATION IN WEST DIDSBURY. The property forms part of an attractive period conversion with the accommodation enjoying the benefit of both gas central heating and double glazing, in outline :- Communal entrance hallway, a private entrance hallway with cloaks space, an impressive 23ft open plan kitchen/living area with walk-in bay window, there are two double bedrooms, the master with an en-suite shower room, alongside the luxury bathroom with white suite and chrome fittings. The property enjoys a great location, being a short stroll from Burton Road with its array of independent boutique shops, popular bars and restaurants. The Metrolink station on Lapwing Lane giving you direct access into the City centre/Media City and the motorway network are also close at hand.

## Directions

M20 2PU





- Stylish first floor apartment
- Attractive period conversion
- Two double bedrooms
- Two bathrooms
- Superb open plan living/kitchen
- Impressive walk-in bay window
- Secure gated parking
- Gas central heating
- Double glazing
- West Didsbury Location

Postcode - M20 2PU

EPC Rating - C

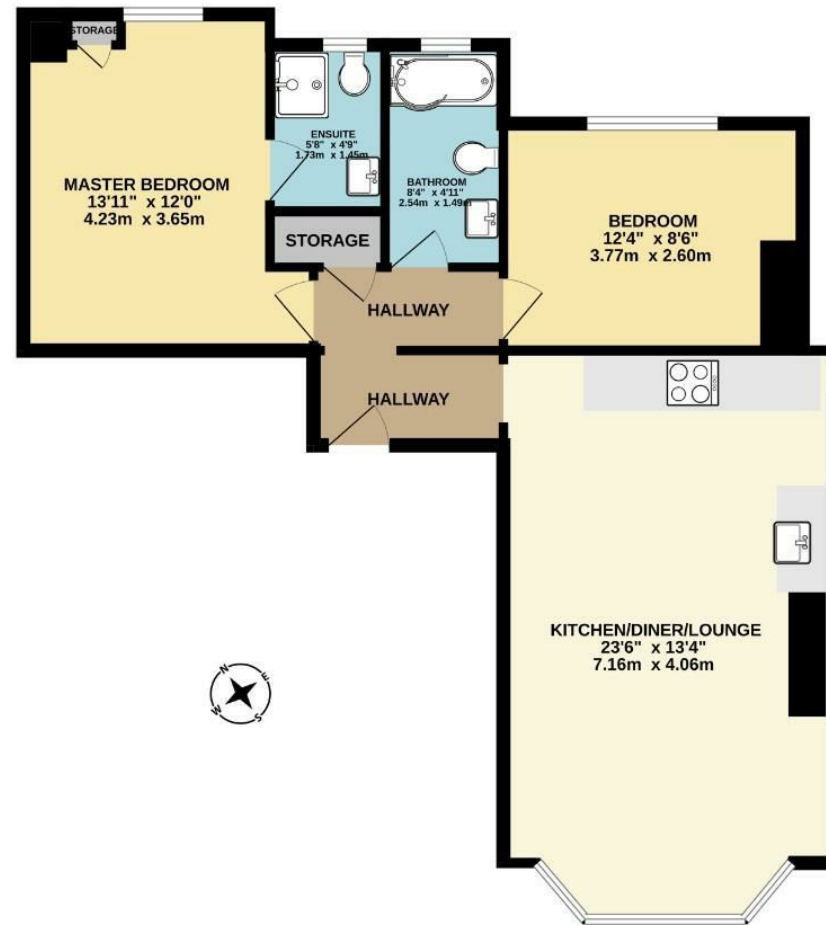
Floor Area - 701.00 sq ft

Local Authority - Manchester City Council

Council Tax - C



FIRST FLOOR  
701 sq.ft. (65.1 sq.m.) approx.



TOTAL FLOOR AREA: 701 sq.ft. (65.1 sq.m.) approx.  
Measurements are approximate. Not to scale. Illustrative purposes only.  
Made with Metrepro ©2023



These particulars are believed to be accurate but they are not guaranteed and do not form a contract. Neither Jordan Fishwick nor the vendor or lessor accept any responsibility in respect of these particulars, which are not intended to be statements or representations of fact and any intending purchaser or lessee must satisfy himself by inspection or otherwise as to the correctness of each of the statements contained in these particulars. Any floorplans on this brochure are for illustrative purposes only and are not necessarily to scale.

Offices also at: Wilmslow, Macclesfield, Hale, Sale, Chorlton, Glossop, Manchester & Salford

757-759 Wilmslow Road, Didsbury Village, Manchester

0161 445 4480

didsbury@jordanfishwick.co.uk  
www.jordanfishwick.co.uk