



Jordan fishwick

1a Chequers Road, Chorlton, Manchester, M21 9DX
Guide Price £750,000



These particulars are believed to be accurate but they are not guaranteed and do not form a contract. Neither Jordan Fishwick nor the vendor or lessor accept any responsibility in respect of these particulars, which are not intended to be statements or representations of fact and any intending purchaser or lessee must satisfy himself by inspection or otherwise as to the correctness of each of the statements contained in these particulars. Any floorplans on this brochure are for illustrative purposes only and are not necessarily to scale.

410-412 Barlow Moor Road, Chorlton, Manchester

01618604444

chorlton@jordanfishwick.co.uk

www.jordanfishwick.co.uk

Offices also at: Wilmslow, Macclesfield, Hale, Sale, Chorlton, Glossop, Manchester & Salford

1a Chequers Road, Chorlton, Manchester, M21 9DX

A simply stunning bay fronted DETACHED property, situated on a highly sought after road in Chorlton Green, just a stone's throw away from Beech Road. This is a RARE opportunity to acquire a substantial FIVE BEDROOM period home benefitting from a separate STUDY, OFF ROAD PARKING and a LARGE GARDEN to the rear. This beautiful property provides VERSATILE ACCOMMODATION over THREE FLOORS, with through or separate lounges on the ground floor and a professionally converted basement offering two double bedrooms from an internal staircase or a separate apartment with external access. The ground floor briefly comprises: Entrance hallway, sitting room with large bay window, spacious rear lounge with bi-folding doors opening to the raised patio area, recently fitted dining kitchen with large centre island. To the first floor there are three well-proportioned double bedrooms, with bedroom one benefitting from a Juliet balcony overlooking the garden, a study, and a modern family bathroom with a four-piece suite. The basement level comprises: Hallway, bedroom/lounge, additional bedroom, dining kitchen, a second bathroom with three-piece suite and access to the external utility room. Large lawned front and rear gardens, gas central heating and double glazing throughout complete this property.

COVERED PORCH

Porch light, step to:

ENTRANCE HALL

16'5" x 7'9"

Front door with double glazed panels, feature original stained glass window, coved ceiling, spindled staircase to first floor, radiator, door and stairs to lower ground floor accommodation.

SITTING ROOM

15'10" (into bay) x 12'1"

Double glazed bay sash window to front aspect, coved ceiling, central heating radiator, TV aerial point, chimney breast with cast iron fireplace with coal effect gas fire within and tiled hearth. Twin oak doors opening to:

LOUNGE

15'9" x 11'0"

Double glazed full height three pane bi-fold doors opening onto patio and rear garden, TV aerial point, central heating radiator, coved ceiling, two wall lights, gas supply within exposed brick fireplace for log effect gas stove with tiled hearth.

DINING KITCHEN

20'7" (max) x 9'10" (Lshaped)

Recently re-fitted with a range of units with gloss white doors comprising: base storage units with worktops over, matching eye level units with concealed under lighting, inset stainless steel sink unit with brushed steel mixer tap, built in Zanussi microwave/grill oven, Zanussi electric fan assisted double oven and grill, integral Bosch dishwasher, integral Zanussi washer dryer, integral fridge/freezer, centre island with gloss grey units, inset Bosch induction hob with stainless steel/glass extractor hood over, integral wine cooler with glass door, two central heating radiators, full height picture window overlooking the rear garden and double glazed French doors, double glazed windows and door opening to rear garden. TV aerial point, Quick Step Impressive oak flooring.

FIRST FLOOR

LANDING

Double glazed window to side aspect, access to boarded loft with pull down loft ladder.

BEDROOM ONE

15'10" x 11'1"

Double glazed French windows overlooking rear garden, central heating radiator, TV aerial point.

BEDROOM TWO

13'0" x 12'2"

Two double glazed sash windows to front aspect, central heating radiator.

BEDROOM THREE

8'10" x 7'8"

Double glazed sash window to front aspect, central heating radiator.

STUDY

6'10" x 5'0"

Double glazed window to side aspect, central heating radiator.

BATHROOM

9'10" x 8'1"

Fitted with a white suite with chrome fittings comprising: panelled bath with bath mixer, wash hand basin with mixer tap, low level wc, large shower with glass door and thermostatic fittings, double glazed window to rear aspect, part tiled walls, extractor fan, wall storage cupboards, ladder towel radiator, electric shaver/toothbrush charging point, Karndean flooring.

LOWER GROUND FLOOR ACCOMMODATION

HALLWAY

9'7" x 8'5"

Double glazed window to side aspect, central heating radiator.

BEDROOM FOUR

14'10" x 10'0"

Double glazed window to side aspect, recessed ceiling lighting, feature glass panel on internal wall, TV aerial point, central heating radiator.

BEDROOM FIVE/LOUNGE

15'1" x 11'1"

Double glazed tilt and turn window to front aspect, central heating radiator, recessed ceiling lighting, TV aerial point.

DINING KITCHEN

12'1" x 9'0"

Fitted range of gloss cream base and wall mounted units, inset stainless steel sink unit with chrome mixer tap, plumbing for washing machine/dryer, space for fridge/freezer and electric cooker, central heating radiator, recessed ceiling lighting, twin double glazed windows to side aspect, double glazed door with steps up to the rear garden.

BATHROOM

6'8" x 5'8"

Fitted with a three piece white suite with chrome fittings comprising: panelled bath with glass shower screen and mixer tap/shower spray, wash hand basin with mixer tap, low level wc, ladder towel radiator, Electric shaver/toothbrush point, recessed ceiling lighting, double glazed window to side aspect, extractor fan, tiled walls and tiled flooring, large feature wall mirror.

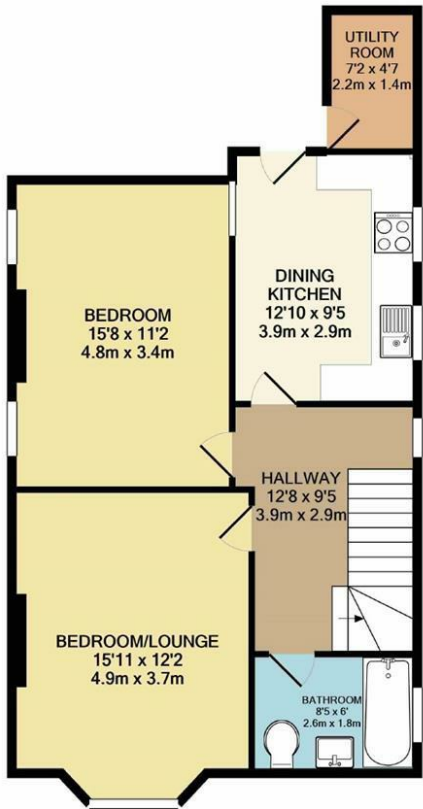
OUTSIDE

GARDENS

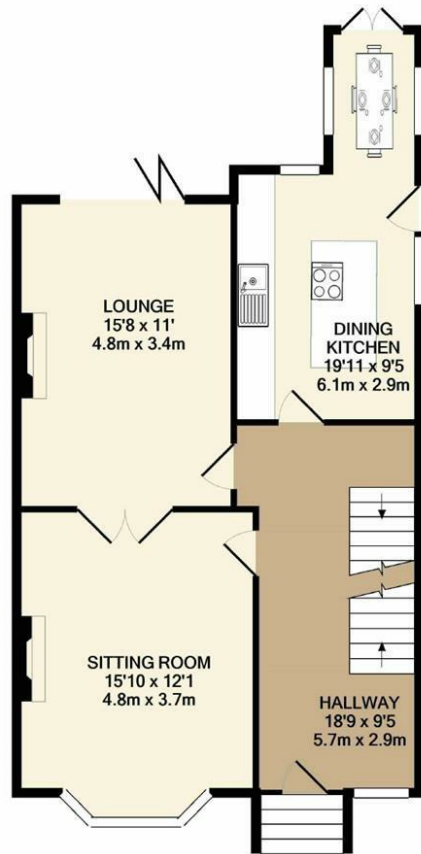
The property is set within a spacious plot with a brick wall enclosed front garden lawn and a block-paved driveway providing off road parking for two large vehicles. A timber fence and gate lead to a large rear garden that is screened, walled and fenced, has a block paved patio, additional paved patio to the bi-folding doors and raised brick flower borders around the lawn. Steps lead down to the lower ground floor accommodation and an external utility/store room housing a Vaillant gas central heating SMART BOILER that has seven years remaining under the manufacturer warranty.



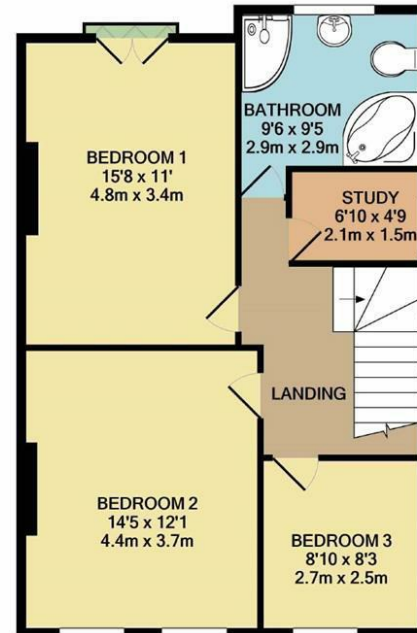
Guide Price £750,000



LOWER GROUND FLOOR
APPROX. FLOOR
AREA 666 SQ.FT.
(61.9 SQ.M.)



GROUND FLOOR
APPROX. FLOOR
AREA 682 SQ.FT.
(63.4 SQ.M.)



1ST FLOOR
APPROX. FLOOR
AREA 619 SQ.FT.
(57.5 SQ.M.)

TOTAL APPROX. FLOOR AREA 1967 SQ.FT. (182.8 SQ.M.)
Measurements are approximate. Not to scale. Illustrative purposes only
Made with Metropix ©2021



Energy Efficiency Rating		
	Current	Potential
Very energy efficient - lower running costs		
(92 plus) A		
(81-91) B		84
(69-80) C		
(55-68) D	64	
(39-54) E		
(21-38) F		
(1-20) G		
Not energy efficient - higher running costs		
England & Wales	EU Directive 2002/91/EC	

These particulars are believed to be correct but they are not guaranteed and do not form a contract. Neither Jordon Fishwick nor the vendor or lessor accept any responsibility in respect of these particulars, which are intended to be statements or representation of fact and any intending purchaser or lessee must satisfy himself by inspection or otherwise as to the correctness of each of the statements contained in these particulars. Any floorplans on this brochure are for illustration purposes only and are not necessarily to scale.

