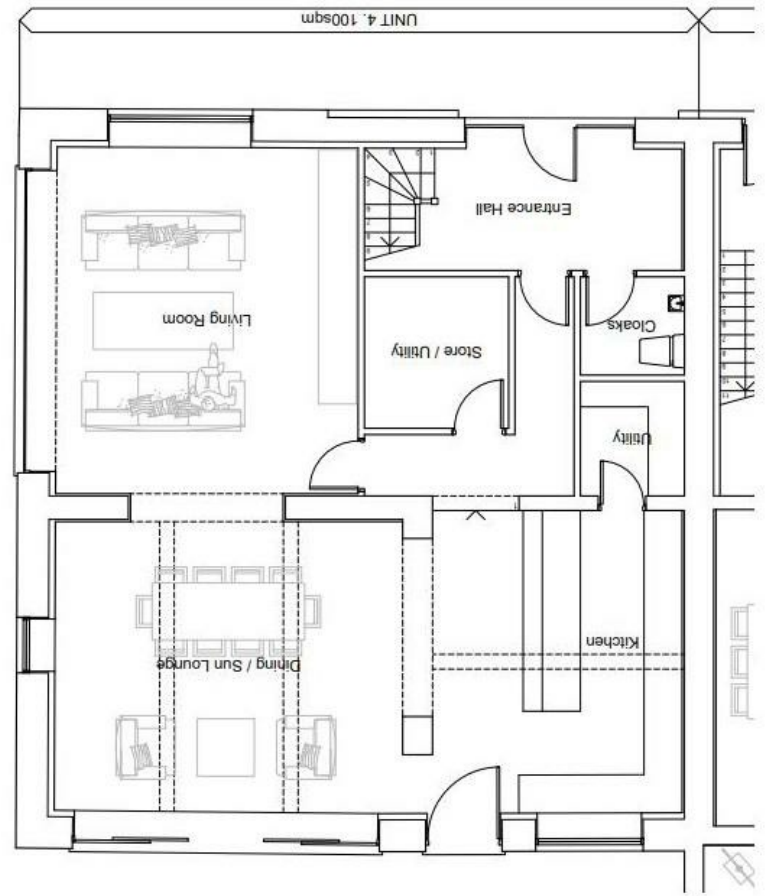


First Floor



Ground Floor



DAVID FODEN.COM

Wybersley Farm Barn Wybersley Road, High Lane, Stockport, SK6 8HB

£825,000



The Property

*** MORE DETAILS COMING SOON - READY FOR OCTOBER 2023 - GET IN TOUCH TODAY *** Set within a Grade II listed barn on the cusp of the Cheshire Countryside and steeped in local history, a stunning, delightful and thoughtfully designed conversion. Select development of only FOUR units, to be finished to the highest of standards mixing both contemporary and character. Bespoke kitchens with island units, luxury bathrooms, parking and private gardens. Offering both three double bedroom and four double bedrooms options. Wybersley Farm Barns are sure to impress. Unit 2 - From £650,000



- Grade II Listed Development
- Four Double Bedrooms & Two En-Suites
- Well Balanced Accommodation
- Excellent Location Adjoining Farmland
- High Quality Throughout
- 30ft x 15ft Open Plan Luxury Kitchen Living Space
- Bespoke Barn Conversion
- Convenient Position
- 10 Year Warranty
- Allocated Parking with Electric Car Charging

Postcode - SK6 8HB
 EPC Rating -
 Local Authority -
 Council Tax - New Build

