



*jordan fishwick*

**WEST DIDSBURY**  
Larke Rise



## Larke Rise, West Didsbury, M20 2UL

Guide Price £350,000



### The Property

A most IMPRESSIVE apartment located within the POPULAR LARKE RISE DEVELOPMENT, standing in LANDSCAPED grounds off Mersey Road in a GREAT LOCATION between Didsbury and West Didsbury Villages. 993 sq ft. The beautifully appointed living space is well planned with numerous noteworthy features including two double bedrooms with ample space for freestanding furniture and the main with a modern en-suite shower room, large open plan kitchen/living area with integrated appliances and direct access to a generous balcony, main bathroom with modern white suite and chrome fittings and a generous L-shaped entrance hall with built-in storage cupboards. In addition, there is a large communal entrance area with security intercom, well tended communal gardens and grounds and allocated parking.

### Directions

M20 2UL



- Impressive second floor apartment
- Popular gated development
- Great location in West Didsbury
- Double glazed windows
- Two double bedrooms
- Modern bathroom & En-Suite
- Large open plan living area/kitchen
- Generous balcony
- Allocated parking
- Prime location in West Didsbury

Postcode - M20 2UL

EPC Rating - C

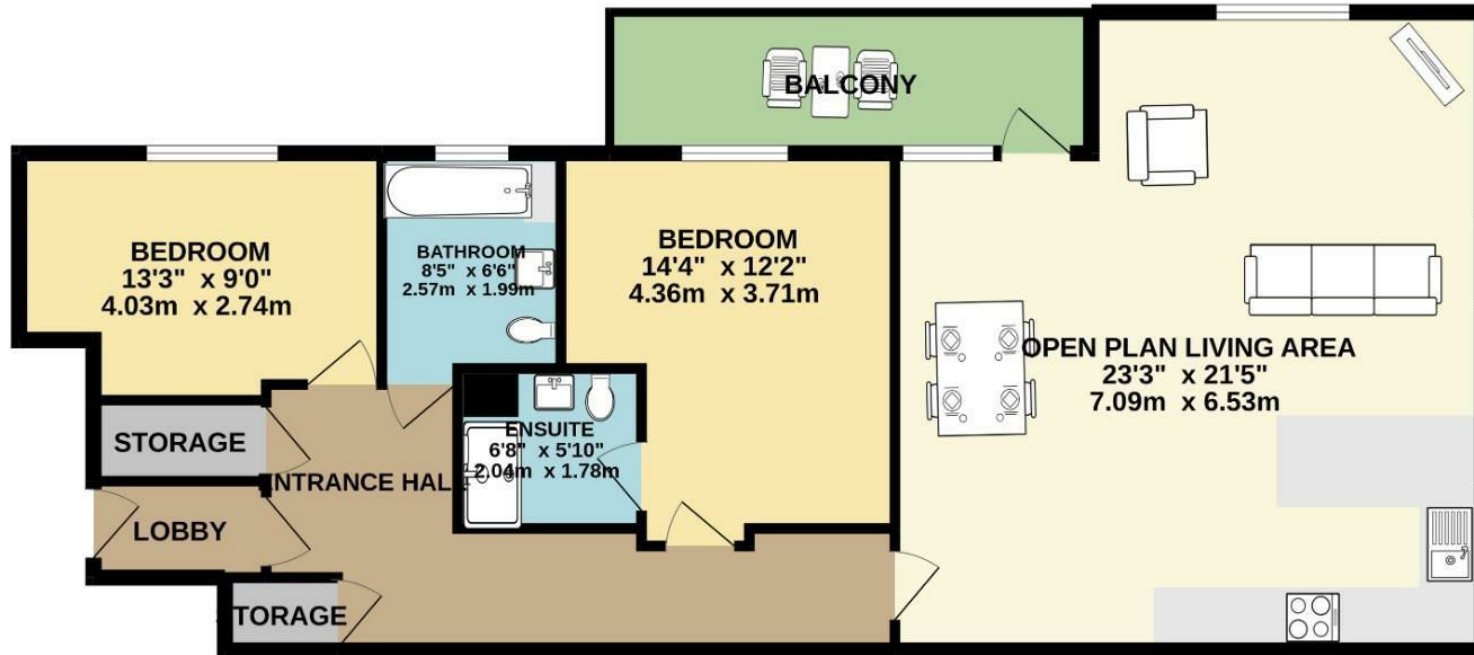
Floor Area - 993.00 sq ft

Local Authority - Manchester City Council

Council Tax - D



SECOND FLOOR  
993 sq.ft. (92.3 sq.m.) approx.



TOTAL FLOOR AREA : 993 sq.ft. (92.3 sq.m.) approx.  
Measurements are approximate. Not to scale. Illustrative purposes only  
Made with Metropix ©2022



These particulars are believed to be accurate but they are not guaranteed and do not form a contract. Neither Jordan Fishwick nor the vendor or lessor accept any responsibility in respect of these particulars, which are not intended to be statements or representations of fact and any intending purchaser or lessee must satisfy himself by inspection or otherwise as to the correctness of each of the statements contained in these particulars. Any floorplans on this brochure are for illustrative purposes only and are not necessarily to scale.

Offices also at: Wilmslow, Macclesfield, Hale, Sale, Chorlton, Glossop, Manchester & Salford

757-759 Wilmslow Road, Didsbury Village, Manchester

0161 445 4480

didsbury@jordanfishwick.co.uk  
www.jordanfishwick.co.uk