



*jordan fishwick*

Town End Flagg High Peak



## Town End Flagg High Peak SK17 9QR

Offers Over £489,950



### The Property

Occupying an enviable position overlooking open farmland in the rural village Flagg, ideally located between Bakewell and Buxton. A charming and most unique semi-detached barn conversion finished to the highest of standards in recent years. Bespoke high quality fittings throughout and complimented by Aluminium double glazing, air source heat pump with underfloor heating and a wealth of exposed beams. Offering three double bedroom accommodation with an en-suite and bathroom to the ground floor, stunning 33ft x 20ft open plan living dining kitchen to the first floor. Driveway parking and private lawn gardens with paved patio. Viewing advised.




- Stunning Views
- Superb Re-Fitted Accommodation
- Rural Location
- Three Bedroom Barn Conversion
- Catchment For Lady Manners School Bakewell
- Air Source Heating
- Wealth Of Beams
- 33ft Open Plan Living Dining Kitchen
- Driveway and Gardens

**Postcode** SK17 9QR

**EPC Rating** C

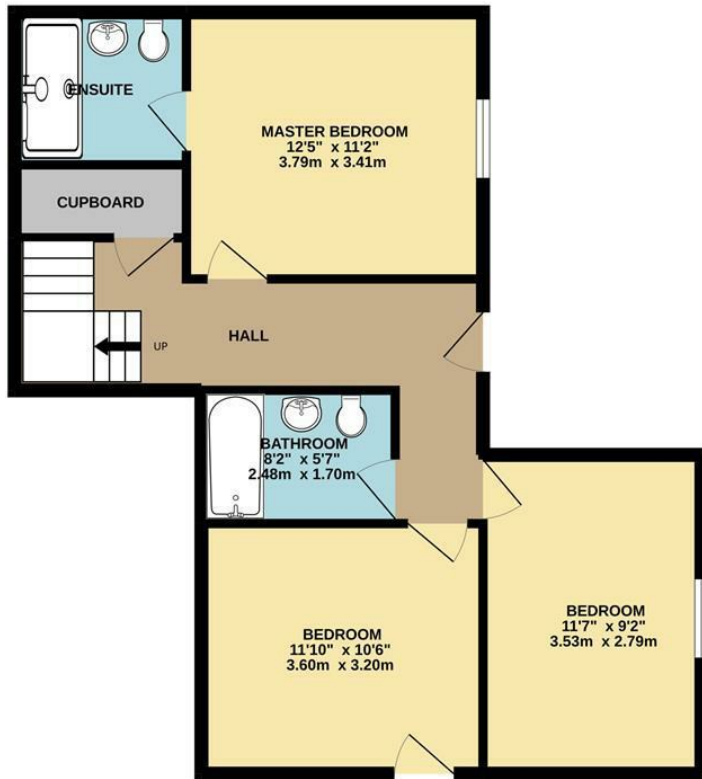
**Local Authority** Derbyshire Dales

**Council Tax** D

Energy Efficiency Rating		Current	Potential
Very energy efficient - lower running costs			
(92 plus)	A		100
(81-91)	B		
(69-80)	C	74	
(55-68)	D		
(39-54)	E		
(21-38)	F		
(1-20)	G		
Not energy efficient - higher running costs			
<b>England &amp; Wales</b>		EU Directive 2002/91/EC 	



GROUND FLOOR



1ST FLOOR



Whilst every attempt has been made to ensure the accuracy of the floorplan contained here, measurements of doors, windows, rooms and any other items are approximate and no responsibility is taken for any error, omission or mis-statement. This plan is for illustrative purposes only and should be used as such by any prospective purchaser. The services, systems and appliances shown have not been tested and no guarantee as to their operability or efficiency can be given.  
 Made with Metropix ©2022



These particulars are believed to be accurate but they are not guaranteed and do not form a contract. Neither Jordan Fishwick nor the vendor or lessor accept any responsibility in respect of these particulars, which are not intended to be statements or representations of fact and any intending purchaser or lessee must satisfy himself by inspection or otherwise as to the correctness of each of the statements contained in these particulars. Any floorplans on this brochure are for illustrative purposes only and are not necessarily to scale.

Offices at: Chorlton, Didsbury, Disley, Hale, Glossop, Macclesfield, Manchester Deansgate, Manchester Whitworth Street, New Mills, Sale, Wilmslow and Withington

14 Market Street, Disley, Cheshire, SK12 2AA

01663 76 78 78

disley@jordanfishwick.co.uk

www.jordanfishwick.co.uk