



jordan fishwick

Flat 1 645 Wilbraham Road, M21 9JT
£1,100 Per Calendar Month

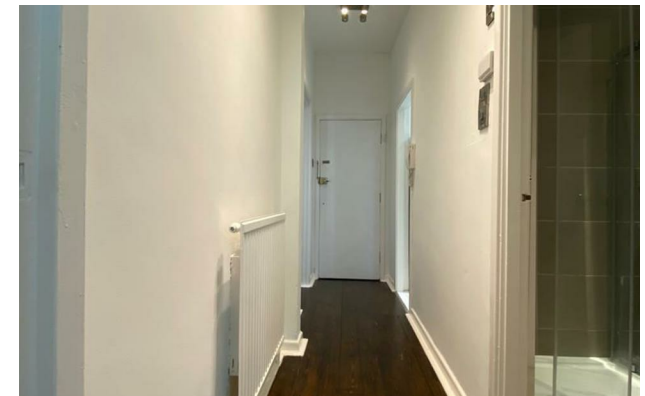
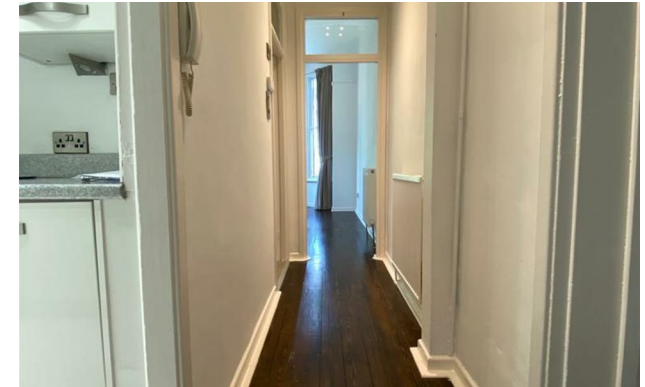


**645 Wilbraham Road
Chorlton M21 9JT**

£1,100 Per Calendar Month


The Property

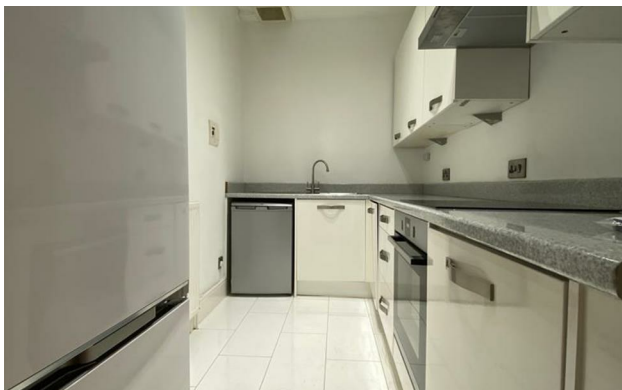
***** AVAILABLE NOW ***** A simply stunning ONE DOUBLE BEDROOM ground floor apartment, set within a beautiful PERIOD BUILDING with OFF ROAD PARKING. Benefitting from a 23 FOOT LIVING ROOM and spacious bedroom with large bay window, this property is stylishly and tastefully decorated throughout and retains many ORIGINAL FEATURES as well as the high ceilings and full height windows. Ideally situated for both Chorlton Village and all local amenities. This wonderful apartment is within a few minutes walk to the Metro providing easy access to Manchester City Centre. The well planned accommodation briefly comprises: Communal entrance hallway, hallway, large living/dining room with original fire place and flooring, a modern fully fitted kitchen, spacious double bedroom with large bay window and bathroom fitted with a beautiful four piece suite and tiled floor. To the front of the property there is off road residents parking whilst to the rear there is an impressive landscaped communal garden with BBQ area. Unfurnished. Call 0161 393 7539.

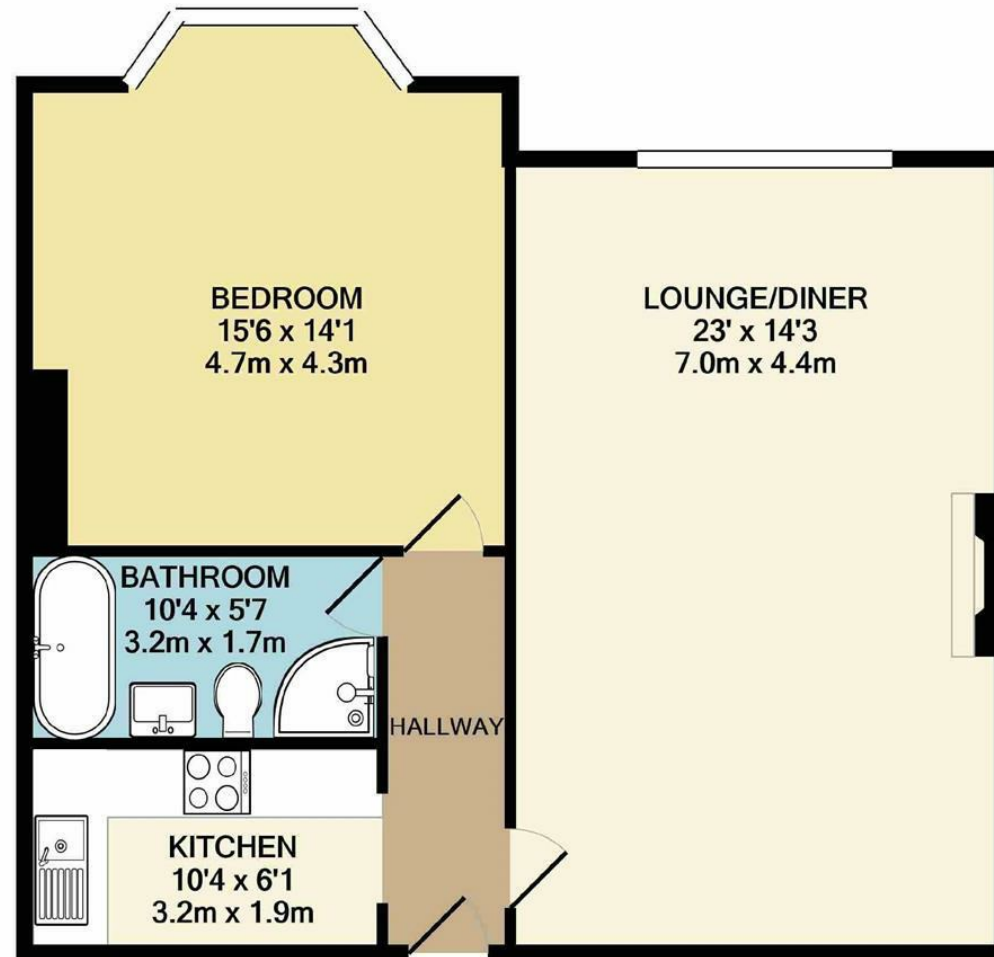


- One bed ground floor apartment
- Close to Chorlton Village and Metro
- Large communal garden and BBQ area
- Off road parking
- 23FT living room
- Original features
- Beautiful period building



Energy Efficiency Rating		
	Current	Potential
Very energy efficient - lower running costs		
(92 plus) A		
(81-91) B		
(69-80) C		
(55-68) D	59	67
(39-54) E		
(21-38) F		
(1-20) G		
Not energy efficient - higher running costs		
England & Wales	EU Directive 2002/91/EC 	





TOTAL APPROX. FLOOR AREA 689 SQ.FT. (64.0 SQ.M.)

Measurements are approximate. Not to scale. Illustrative purposes only
Made with Metropix ©2021



These particulars are believed to be accurate but they are not guaranteed and do not form a contract. Neither Jordan Fishwick nor the vendor or lessor accept any responsibility in respect of these particulars, which are not intended to be statements or representations of fact and any intending purchaser or lessee must satisfy himself by inspection or otherwise as to the correctness of each of the statements contained in these particulars. Any floorplans on this brochure are for illustrative purposes only and are not necessarily to scale.

Offices at: Offices at Chorlton, Didsbury, Disley, Hale, Glossop, Macclesfield, Manchester Deansgate, Manchester Whitworth Street, New Mills, Sale, Wilmslow and Withington