



Jordan fishwick

Upper Chorlton Road
Whalley Range



**Upper Chorlton Road
Whalley Range M16 7SH**
£1,320 Per Calendar Month



The Property

****AVAILABLE MAY **** We are delighted to offer this three bedroom, two bathroom stylish modern Apartment within a popular Development - Jackson Moss. The property offers: Entrance hall, large open plan living area with fully fitted kitchen and balcony overlooking the gardens, three good sized bedrooms, master with en-suite and separate family bathroom. Maintained large communal Gardens. Close to Chorlton Centre with an array of bars, cafes, local shops and the Metrolink. Double glazed and Gas central Heating. Offered on an unfurnished basis.

***** To arrange a viewing please call 0161 3937539 *****

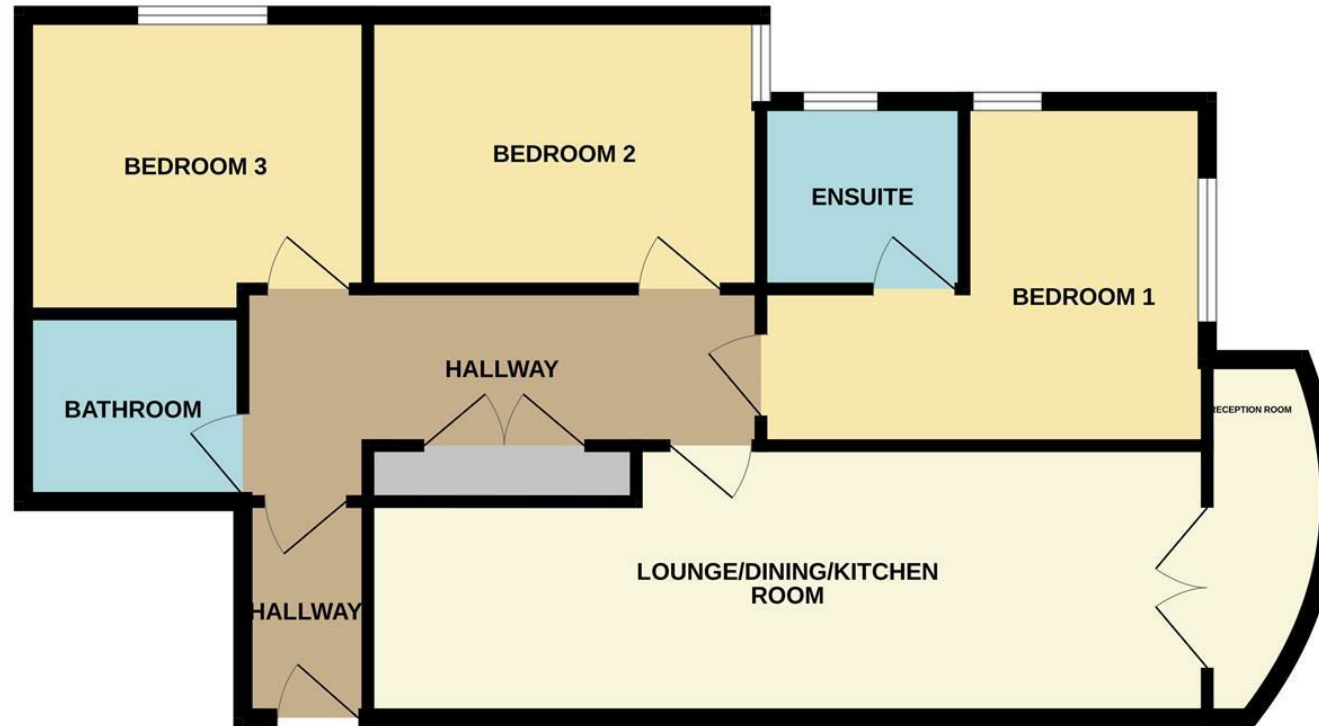
Directions

- Available May
- Three bedrooms
- Master bedroom with en-suite
- Gas central heating & Double Glazed
- Open plan living area with Balcony
- Close to Chorlton Centre
- Council Tax Band C

Postcode - M16 7SH
EPC Rating - C
Floor Area - sq ft
Local Authority - Manchester
Council Tax - C



SECOND FLOOR



Whilst every attempt has been made to ensure the accuracy of the floorplan contained here, measurements of doors, windows, rooms and any other items are approximate and no responsibility is taken for any error, omission or mis-statement. This plan is for illustrative purposes only and should be used as such by any prospective purchaser. The services, systems and appliances shown have not been tested and no guarantee as to their operability or efficiency can be given.
Made with Metropix ©2024



These particulars are believed to be accurate but they are not guaranteed and do not form a contract. Neither Jordan Fishwick nor the vendor or lessor accept any responsibility in respect of these particulars, which are not intended to be statements or representations of fact and any intending purchaser or lessee must satisfy himself by inspection or otherwise as to the correctness of each of the statements contained in these particulars. Any floorplans on this brochure are for illustrative purposes only and are not necessarily to scale.

Offices at: Offices at Chorlton, Didsbury, Disley, Hale, Glossop, Macclesfield, Manchester Deansgate, Manchester Whitworth Street, New Mills, Sale, Wilmslow and Withington

410-412 Barlow Moor Road, Chorlton, Manchester, M21
8AD

www.jordanfishwick.co.uk