



Apt 004 Phoenix, Chapeltown Street, Manchester, M1 2EY

Design-led interiors with exposed concrete and steel
Huge floor-to-ceiling windows
Ground floor
2 bed, 1 bath
Lush residents' garden with BBQs & firepits
Pet friendly
24/7 concierge and bike storage
5 mins to Piccadilly Station, Ancoats & NQ

Price £250,000

Viewing arrangements

Viewing strictly by appointment through the agent
245 Deansgate, Manchester, M3 4EN 0161 833 9499 opt 3

Living Room/Kitchen

21'9" x 14'3"

Stunning room with features such as concrete ceilings, exposed metalwork and full height window and sliding door. Fully fitted kitchen with appliances, continuous flooring.

Bedroom One

13'9" x 10'4"

Wooden flooring. Wall light. Wall mounted heater.

Bedroom Two

10'3" x 8'10"

Wooden flooring. Wall light. Wall mounted heater.

Bathroom

Stunning bathroom with luxury fittings. Low level w/c. Sink with mixer tap. Bath with mixer shower over.

Additional Information

Service charges - £3471.65 per annum.

Ground rent - Peppercorn

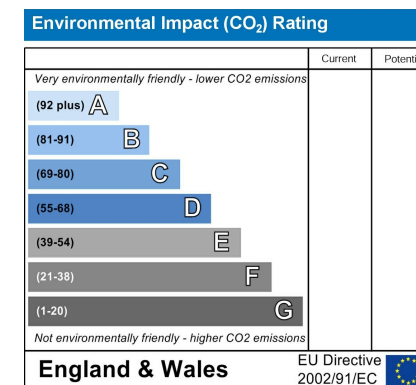
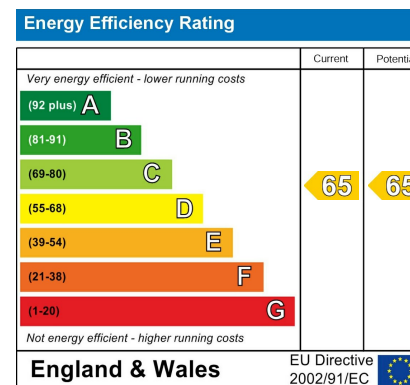
Lease is 250 years from 2015

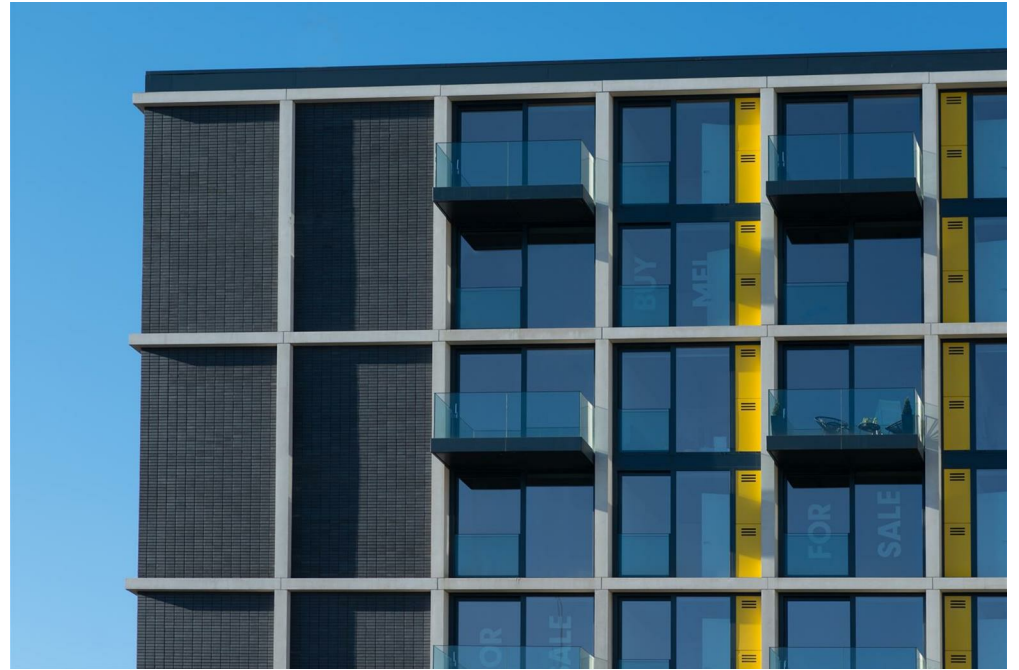
Managing Agent Zenith

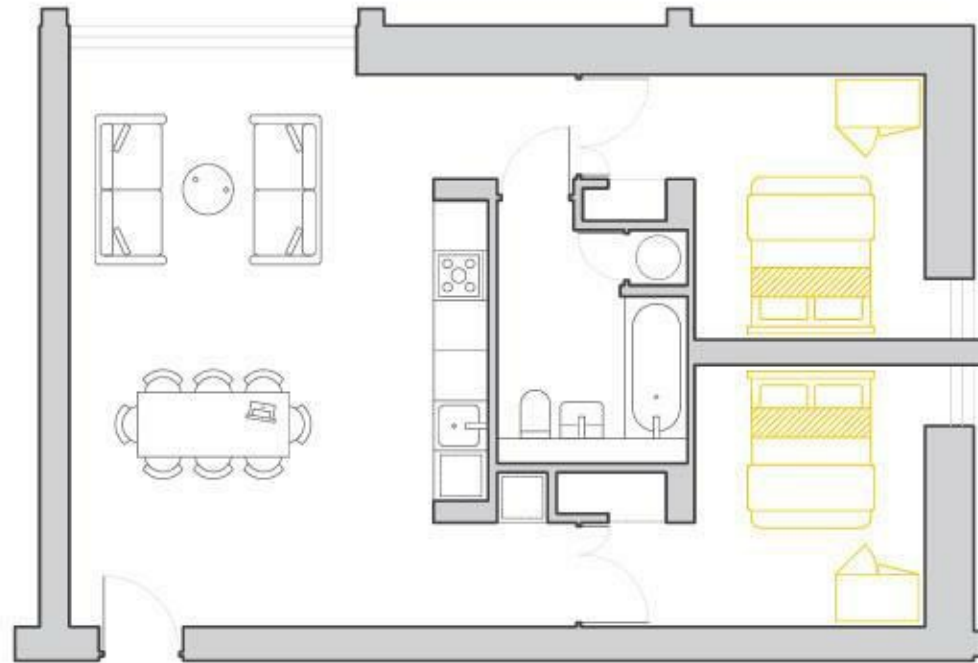
Disclaimer

IMPORTANT NOTE TO PURCHASERS: The lease, ground rent and service charges should all be checked via the solicitors for clarification. We endeavour to make our sales particulars accurate and reliable, however, they do not

constitute or form part of an offer or any contract and none is to be relied upon as statements of representation or fact. The services, systems and appliances listed in this specification have not been tested by us and no guarantee as to their operating ability or efficiency is given. All measurements have been taken as guide to prospective buyers only, and are not precise. If floor plans where included, these may not be to scale and accuracy is not guaranteed. If you require clarification or further information on any points, please contact us.







These particulars are believed to be accurate but they are not guaranteed and do not form a contract. Neither Jordan Fishwick nor the vendor or lessor accept any responsibility in respect of these particulars, which are not intended to be statements or representations of fact and any intending purchaser or lessee must satisfy himself by inspection or otherwise as to the correctness of each of the statements contained in these particulars. Any floorplans on this brochure are for illustrative purposes only and are not necessarily to scale.

Offices at: Chorlton, Didsbury, Disley, Hale, Glossop, Macclesfield, Manchester Deansgate, Manchester Whitworth Street, New Mills, Sale, Wilmslow and Withington

245 Deansgate, Manchester, M3 4EN

0161 833 9499 opt 3

manchester@jordanfishwick.co.uk

www.jordanfishwick.co.uk

