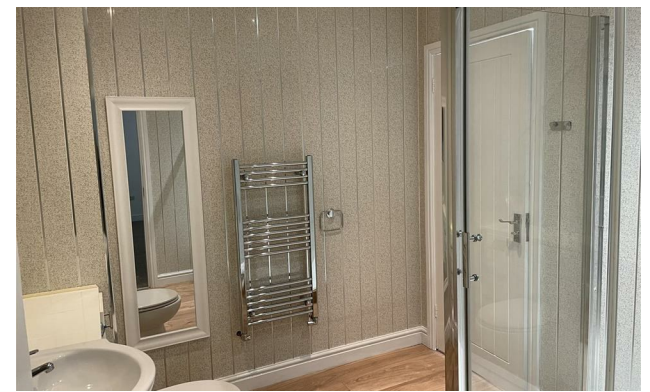




26A SYLVAN COURT UNION ROAD NEW MILLS HIGH PEAK SK22 3EN

****AVAILABLE NOW**** Amazingly refurbished and immaculate 1 bed ground floor flat, the size of which can't be ignored being 88m², making it ideal for singles or couples alike. Fantastic Location, enjoying easy access to all local amenities; added to which it's close to The Torrs! and New Mills railway station, with direct line into Manchester. Call 01663 767 876 quickly!!!



Energy Efficiency Rating		Current	Potential
Very energy efficient - lower running costs			
(92 plus) A			
(81-91) B			
(69-80) C			
(55-68) D			
(39-54) E			
(21-38) F			
(1-20) G			
Not energy efficient - higher running costs			
England & Wales		EU Directive 2002/91/EC	