

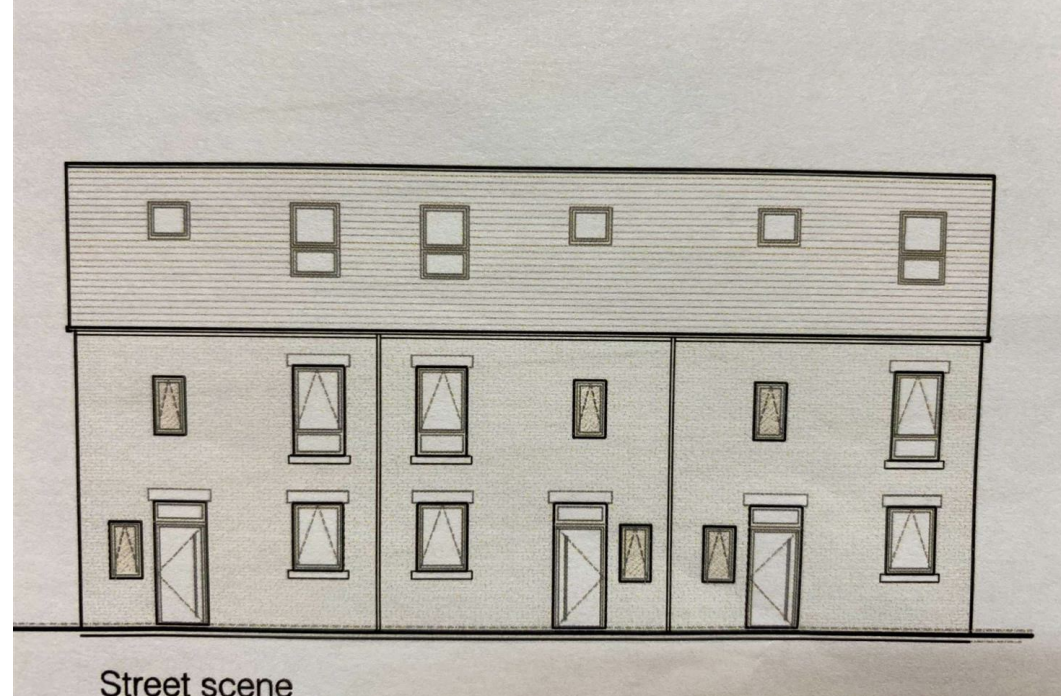
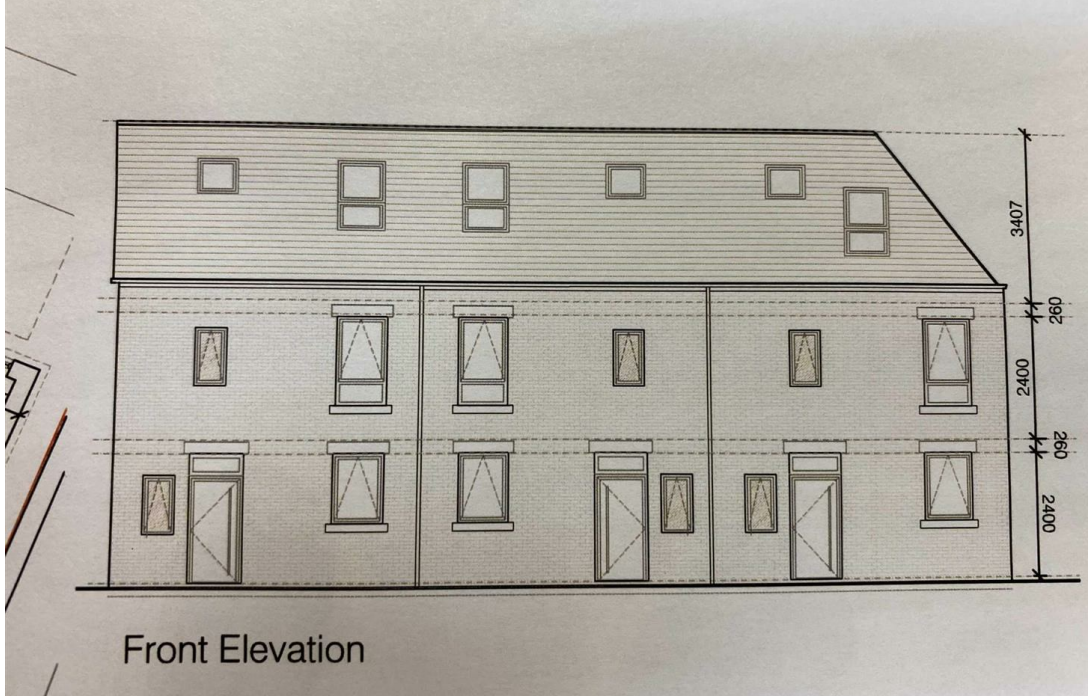
## 64 - 72 DELAMERE ROAD HANDFORTH SK9 3RB

ATTENTION DEVELOPERS

BUILDING PLOT WITH PLANNING PERMISSION FOR THREE DWELLINGS WITH OFF ROAD PARKING AND PRIVATE REAR GARDENS. VENDOR HAS INFORMED US THAT THERE IS BOTH WATER AND ELECTRIC SUPPLY TO THE DEVELOPMENT. (THIS HAS NOT BEEN CHECKED BY JF)

<http://planning.cheshireeast.gov.uk/applicationdetails.aspx?pr=18/3362M>

contact JORDAN FISHWICK 01625 532000 FOR MORE DETAILS



- Building plot
- Planning permission for three dwellings
- <http://planning.cheshireeast.gov.uk/application-pr=18/3362M>
- Close to Handforth centre
- Walking distance of train station
- Easy access to all amenities
- Private Gardens
- Off road parking

Energy Efficiency Rating		Environmental Impact (CO <sub>2</sub> ) Rating			
	Current	Potential		Current	Potential
Very energy efficient - lower running costs			Very environmentally friendly - lower CO <sub>2</sub> emissions		
(92 plus) <b>A</b>			(92 plus) <b>A</b>		
(81-91) <b>B</b>			(81-91) <b>B</b>		
(69-80) <b>C</b>			(69-80) <b>C</b>		
(55-68) <b>D</b>			(55-68) <b>D</b>		
(39-54) <b>E</b>			(39-54) <b>E</b>		
(21-38) <b>F</b>			(21-38) <b>F</b>		
(1-20) <b>G</b>			(1-20) <b>G</b>		
Not energy efficient - higher running costs			Not environmentally friendly - higher CO <sub>2</sub> emissions		
<b>England &amp; Wales</b>	EU Directive 2002/91/EC		<b>England &amp; Wales</b>	EU Directive 2002/91/EC	